

Okanagan Rail Trail Works 2019

RDNO owned sections (north of Lake Country)

Updated August 30, 2019



Westkal Parking Area Improvements

Start Date: August 8, 2019

The Westkal Road Parking Area improvements include increased safety and mitigation of exposed slopes and erosion. The parking area will be paved and there will be designated walking paths from user vehicles to the trail entrance. This will result in a more established parking area, with the trail access points better defined and clearly visible.

Alternate ORT Access Points: The District of Coldstream has recommended that users park in the Coldstream Parking Lot located at 16506 Kalamalka Road. The RDNO has a parking lot on Bailey Road, located at 201 BC-97 that can be utilized by the public, and is a connection between the Kal Crystal Waters trail and the Okanagan Rail Trail. Please note that this slope is slightly steeper, so users are encouraged to take this into consideration when planning their trip.

Trail users can visit the interactive map at www.okanaganrailtrail.ca to see parking options.

Expected completion: September 2019



Erosion Protection

Start Date: September 3, 2019

Part of the reason that the Okanagan Rail Trail is so popular is because it runs alongside two emerald green lakes, Kalamalka and Wood Lake. These beautiful neighbours to the trails also cause erosion that eat into the width of the rail trail. Every wave that touches the side of the Okanagan Rail Trail takes sand and materials with it, and over time, the pathway becomes narrower. With less room for two-way pedestrian and bike traffic, safety issues mount and the risk for potential injury rise. The erosion is an immediate threat to the longevity of the Okanagan Rail Trail, and the RDNO will be working on mitigating the erosion in the RDNO owned section from kilometre 2 to 12 beginning after the Labour Day weekend.

The work will mean that there will be some days with one-way pedestrian and biking traffic, and no access temporarily to certain portions of the trail from morning until 5 pm. **The trail will remain open and accessible on evenings by 5 pm and all weekends.** Special events that have been approved for the Okanagan Rail Trail will not be affected. See the construction schedule on the back to help plan your route.

Expected completion: October 2019



North Extension

Start Date: October 2019

Once the Westkal parking area improvements are completed, the RDNO will be working on the North Extension of the Okanagan Rail Trail. This phase of the construction will include the completion of the base trail which means that the basic grading and width will be defined. This section is located near the trestle on Westkal Road and will tie the Okanagan Rail Trail to the pathway at college way. Construction will also include grading of adjacent slopes, the creation of berms to delineate the trail as it comes up to college way, as well as signage and bollards at the access point.

UPCOMING OPEN HOUSE - On Tuesday, September 17, 2019, from 4:30 – 7:30 pm at the Coldstream Women's Institute Hall, 9901 Kalamalka Rd, Coldstream, have your say on proposed concept designs for the Okanagan Rail Trail North Extension design and the washroom design on Westkal Road.

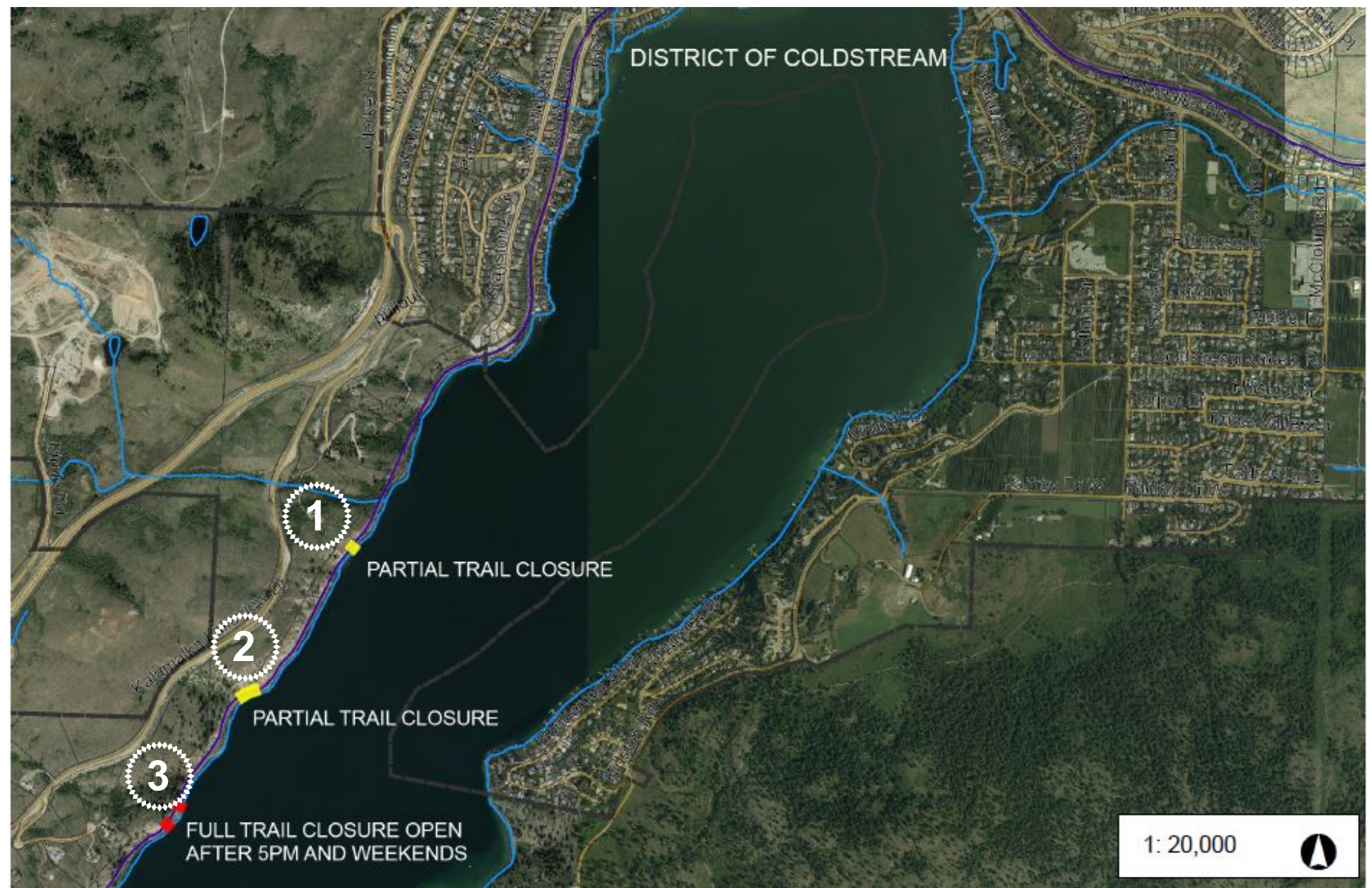
Expected completion: Spring 2020



Erosion Protection - Closure Schedule

Between Coldstream and Km 4

1. September 3 to 15 - there will be a partial closure at this site. One way traffic will be allowed through. Full access will be available by 5 pm and on all weekends.
2. September 3 to 15 - there will be a partial closure at this site. One way traffic will be allowed through. Full access will be available by 5 pm and on all weekends.
3. September 16 to 27 - There will be a **full closure** at this site. There will be no access or through traffic from the morning to 5 pm. Full access will be available by 5 pm and on all weekends.



Between Km 4 and Kekuli Bay

4. September 3 to 15 - there will be a partial closure at this site. One way traffic will be allowed through. Full access will be available by 5 pm and on all weekends.
5. September 3 to 15 - there will be a partial closure at this site. One way traffic will be allowed through. Full access will be available by 5 pm and on all weekends.
6. September 3 to 15 - there will be a partial closure at this site. One way traffic will be allowed through. Full access will be available by 5 pm and on all weekends.



Between Kekuli Bay and Lake Country

7. September 16 to 27 - There will be a **full closure** at this site. There will be no access or through traffic from the morning to 5 pm. Full access will be available by 5 pm and on all weekends.
8. September 16 to 27 - There will be a **full closure** at this site. There will be no access or through traffic from the morning to 5 pm. Full access will be available by 5 pm and on all weekends.
9. September 3 to 15 - there will be a partial closure at this site. One way traffic will be allowed through. Full access will be available by 5 pm and on all weekends.
10. September 3 to 15 - there will be a partial closure at this site. One way traffic will be allowed through. Full access will be available by 5 pm and on all weekends.

