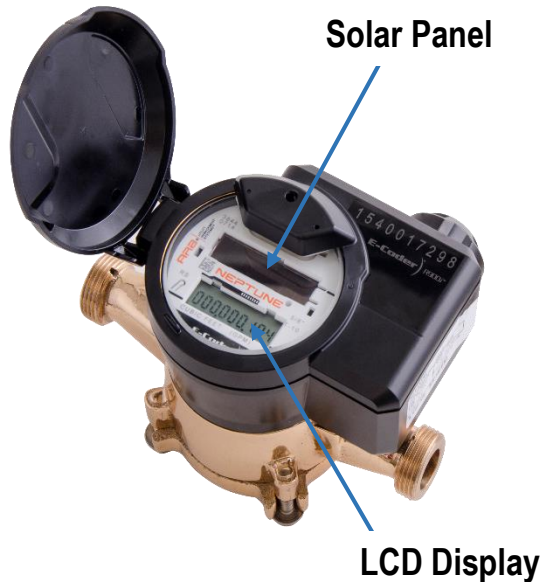


HOW TO READ YOUR WATER METER



The Utility staff will read your meter for billing purposes, but **should you wish to monitor your own consumption**, here's how:

- Continually shine a flashlight over the solar panel (located on the register) to activate the LCD display *
- Take a reading at a set time of the day
- Take a 2nd reading at the same time the next day
- The difference between the two readings is your daily water consumption
- Note: when the register display is first activated via a flashlight, all icons will be briefly displayed followed by firmware information. The register display will then toggle (every 8 seconds) displaying the reading and then the flow rate. The flow rate is per minute. When the display indicates "RATE", the flow rate is being displayed.

Leak Indicator

– displays a possible leak

- ◆ **OFF** – indicates no leaks
- ◆ **Flashing** – water usage for more than 50% of time in 24 hour period
- ◆ **Continuous ON** – there is most likely a leak in your home



The 9 digit LCD displays your meter reading in cubic metres
The last 4 digits of the reading are decimal points.
(e.g. – 26.3987 cubic metres)
(decimal will be displayed)

Flow Indicator

– displays direction of water flow

- ◆ **ON**– water in use
- ◆ **OFF** – water not in use
- ◆ **Flashing** – water is running slowly
- ◆ **(-)** - indicates reverse flow
- ◆ **(+)** – indicates forward flow