



SEC.11

SEC



REGIONAL DISTRICT OF NORTH OKANAGAN

ELECTORAL AREA F OFFICIAL COMMUNITY PLAN

Schedule D - Detail 4 Fall Creek Slide Development Permit Area

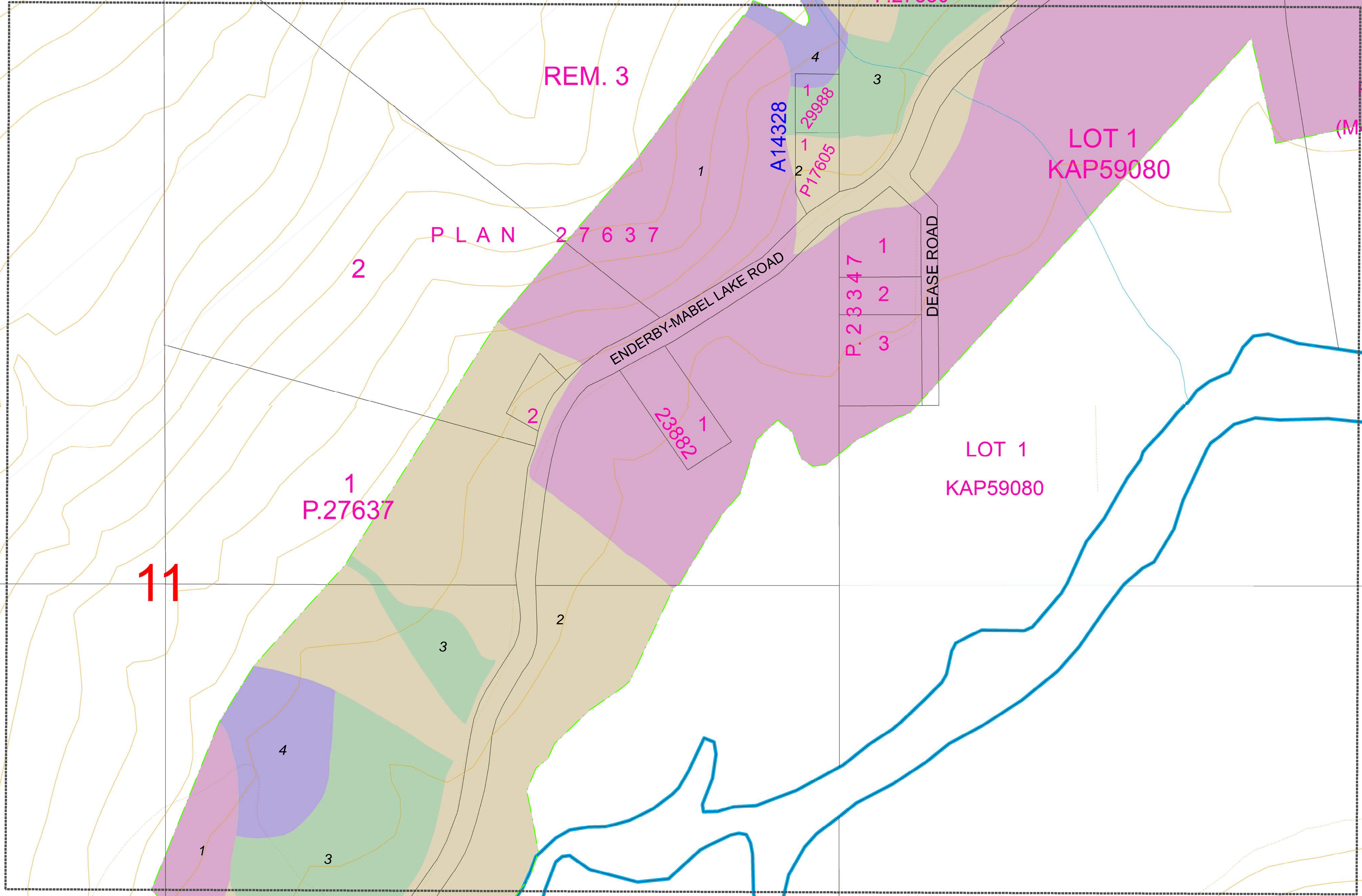
To Accompany Official Community Plan Bylaw No. 2702, 2016

LEGEND

Hazard Rating

- 0 - Low
- 1
- 2 - Medium
- 3
- 4 - High

- Fall Creek Slide Development Permit Area Boundary and Limit of Data from Source
- Map Sheet Boundaries



11

Schedule "D" to accompany Regional District of North Okanagan "Electoral Area "F" Official Community Plan Bylaw No. 2702, 2016"

I hereby certify the foregoing to be a true and correct copy of Schedule "D" attached to and forming part of Bylaw No. 2702, 2016 cited as "Electoral Area "F" Official Community Plan Bylaw No. 2702, 2016" as ADOPTED by The Board of Directors on the ___ day of ___, 2016.

Dated at Coldstream, BC this ___ day of ___, 2016.

Corporate Officer

Data Source: Debris Flow Hazard Assessment - Fall Creek Slide Area, report to Provincial Emergency Program, Ministry of Solicitor General, Thurber Engineering Ltd. November 1990, File 15-52-0

