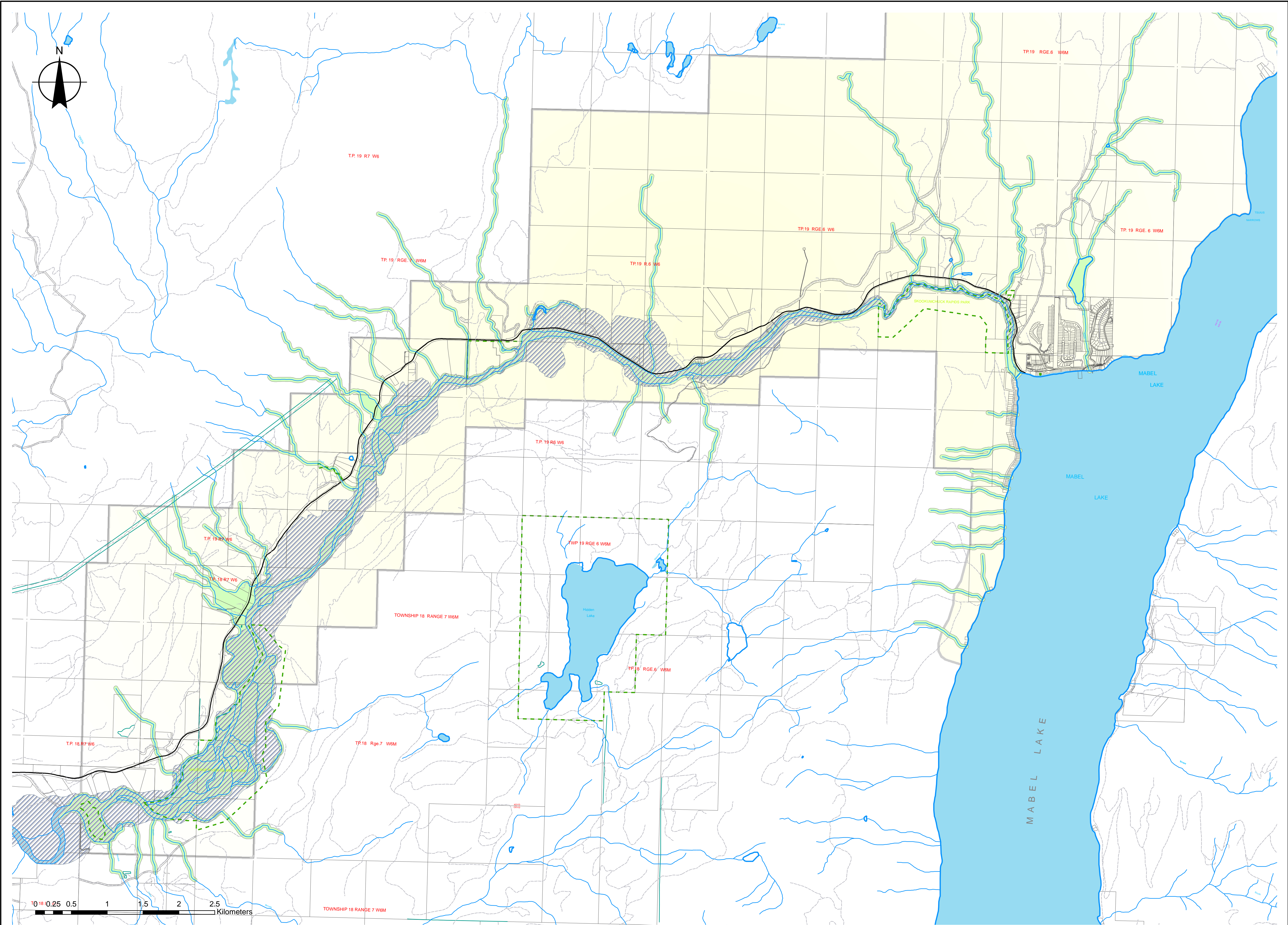


*Kingfisher / Rachel Fabe*

# Appendix B: Development Permit Areas Map



Plotted: P:\161 - BC Interiors\Site\_360\_2010\King\_Fisher\Technical\Civil\Drawings\Current\Drawings\Development\Permit Areas.mxd 2011-01-17 11:24 am bmfj



**Legend**

- Gravel Road
- Local Road (paved)
- Major Road (paved)
- International Boundary
- Regional Boundary
- Reserve Boundary
- Park Boundary
- Cadastral
- DPA - 200 Year Floodplain
- DPA - Water Course 30m Setback
- Study Area


A	2010-09-01	PRELIMINARY
		JRB
		revision

Issue:	<b>ISSUED FOR REVIEW</b>
drawn by:	JRB
designed by:	AB
checked by:	AB
approved by:	AB
scale:	1:25,000
date:	2010-11-02

**MMM GROUP**

101-389 Queensway Ave, Kelowna, BC, V1Y 8E6  
 t. 250.869.1334 | f. 250.869.1364 | www.mmm.ca

NORTH OKANAGAN REGIONAL DISTRICT

**KINGFISHER LOCAL AREA PLAN  
 MABEL LAKE, BC**

**DEVELOPMENT PERMIT AREAS**

project no.	5110-006-001
file name	SITEMAP.mxd
sheet no.	1 of 1
drawing no.	C001
revision no.	A