

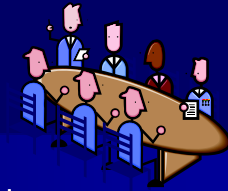
What do you mean, GOVERNANCE?



- All about **WHO** makes **DECISIONS** for the community
- **LOCAL GOVERNANCE** is the responsibility of the province
- In BC, **LOCAL COMMUNITIES** decide on local governance options

1

What type of GOVERNANCE do we have now?



- **RDNO** is the local government
- RDNO's **Board of Directors** is the governing body for all electoral areas
- **13 Directors** represent the various jurisdictions in the RDNO
- **Electoral Areas** are represented by a directly elected **Electoral Area Director**

2

Considering the Options...



1. Remain Unincorporated
"Status Quo"
2. Incorporate as a New Municipality
"Incorporation"
3. Join an existing Municipality
"Amalgamation"

3

Option 1: Remain Unincorporated



... as an Electoral Area within the
Regional District of North Okanagan

4

Option 1: "Status Quo"



- Under this option, the Electoral Areas (EA) would remain separate, unincorporated jurisdictions within the Regional District of North Okanagan (RDNO).
- Each EA will be represented on the 13-member RDNO Board, as it is today, by an Electoral Area Director, together with appointees from the Councils of the six member municipalities.
- RDNO will continue to serve as the local government for the EAs. The RDNO Board will be the primary decision-making body, responsible for making a wide range of decisions dealing with existing services and future needs.

5

Option 1: "Status Quo"



- The Regional Board would continue to make decisions for with the operation and administration of local EA services, as they are today.
- Key decisions on EA service budgets, the establishment of new services and certain planning matters would continue to be made by the entire 13-member Board.
- Local policing, local roads and subdivision approval would continue to be provided by the Province. Decisions relating to these local services would continue to be made by the Provincial Government.

6

Option 1: "Status Quo"



- TAXES are used to finance most Regional District services and are paid by property owners to the Province.
- Funds are then remitted back to the Regional District according to the amounts budgeted by the Regional Board to finance the services.
- The tax rates are established by the Province.

7

Option 2: Incorporate



As a separate municipality,
in combination with 1, 2 or more electoral areas

8

Option 2: "Incorporation"



- This option would result in the incorporation of a new, separate municipality. The new municipality could consist of one, two, or more electoral areas combined.
- The new municipality would have its own, directly elected Municipal Council, with a Mayor and 4 or more Councillors elected to represent their constituents. Voting could be at-large or via a ward system. One or more representatives would be appointed to the Regional Board based on population.
- The new Municipal Council would be the primary decision-making body, responsible for determining the community's future needs and priorities.

9

Option 2: "Incorporation"



- The new municipality would assume responsibility for most of the local services previously provided by the Regional District, and would determine which new services to provide, the level of service, and service delivery arrangements.
- Some regional or sub-regional services may still be delivered by the Regional District, or via arrangements with other municipalities.
- The new municipality would also assume control and responsibility for local services that were previously provided to the electoral areas by the Province, such as local roads, policing and subdivision approval.

10

Option 2: "Incorporation"



- **TAXES** would be paid to the new municipality, which is responsible for setting the tax rates.

11


Option 3: "Amalgamate"



Join an Existing Municipality

12


Option 3: "Amalgamation"



- An existing municipality's Council would be the local government for the expanded municipality.
- The former electoral areas may or may not have a specific representative on Council, depending on whether voting was at-large or via a ward system.
- The Municipal Council would be the primary decision-making body, responsible for determining the expanded community's future needs and priorities. One or more representatives would be appointed to the Regional Board based on population.

13


Option 3: "Amalgamation"



- The expanded municipality would assume responsibility for most of the local services previously provided by the Regional District, and would determine which local services to provide, the level of service, and service delivery arrangements.
- Some regional or sub-regional services may still be delivered by the Regional District, or via arrangements with other municipalities.
- The expanded municipality would also assume control and responsibility for local services that were previously provided to the electoral areas by the Province, such as local roads, policing and subdivision approval.

14


Option 3: "Amalgamation"



- **TAXES** would be paid to the expanded municipality, which is responsible for setting the tax rates.


15

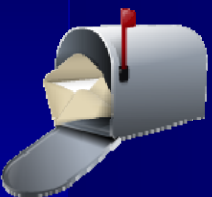
"Westside Story"



- **LONG & COSTLY PROCESS**, more than 5 years in the making
- **EDUCATION CAMPAIGN** research & information, opportunity to review, discuss, scrutinize, engage!
- **IMPLICATIONS OF GOVERNANCE RESTRUCTURE** key local services, governance, costs, public process
- **BOUNDARY CHANGES**

16

Governance Questionnaire 

Coming Soon to a mailbox near you! 

17

Governance Questionnaire 

1 Do you want to change the way your Electoral Area is governed, either by joining an Existing Municipality or becoming a separate Municipality?

YES


NO

2 If change happens, which option would you prefer:

Join an existing Municipality


Create a new Municipality

18

Restructure Study 

- "WHY CAN'T YOU TELL ME WHICH OPTIONS I SHOULD CHOOSE?"
- "WHY CAN'T YOU PROVIDE ME WITH MORE DETAILED INFORMATION?"
- "WHY CAN'T YOU TELL ME HOW MUCH MY TAXES WOULD GO UP (OR DOWN)?"

19

Restructure Study 

- Restructuring is a complicated issue.
- A framework is required to analyze restructure options.
- There are no easy answers.

20

Restructure Study

- Administrative Efficiency:**
 What will be the impacts on the administration of local services? Will there be increases in efficiency due to restructuring? Will residents have better access to the administrative process?
- Community Impacts:**
 What impacts will restructuring have on non-financial characteristics of life in the community? For example, will the type, amount and location of community growth change as a result of restructuring local government?
- Financial:**
 Each restructure option would produce a different set of spending levels and property taxes. The financial impacts are usually the most important factors in ranking the attractiveness of changing the way local government works.

21

Restructure Study

- Representation:**
 Each option will change the political structure of the area and sub-areas. Will residents see their political strength increase or decrease?
- Authority and Responsibility:**
 Restructuring means shifts in who determines services, taxes, and community policies. How much accountability will there be? Will those with authority for changing services bear the responsibility for these changes?
- Environment:**
 Changing the local government structure might mean a shift in the power to protect the environment.

22

Restructure Study

- Local Services:**
 Restructuring will mean a shift in how services are provided, but may also affect who decides what services are required and how they are able to be delivered.
- Implementation:**
 Not all restructuring options can be implemented with consistent ease; some may require far more conditions than others.

23

The End?

Area B:

Cliff Kanester
cliff.kanester@rdno.ca

Mike Gavinchuk

Area C:

Stan Field
stan.field@rdno.ca

Mike Macnabb

RDNO 550-3700

Electoral Area Services
eas@rdno.ca

Greg Betts, General Manager
Inge van Oostveen, Executive Clerk

Phone: (250) 550-3700
 Fax: (250) 550-3701

24