
FOR IMMEDIATE RELEASE

DATE: August 14, 2018
MEDIA CONTACT: Mike Fox, General Manager, Community Services
PHONE/EMAIL: 250.550.3719 / mike.fox@rdno.ca

Public Urged to Keep Distance from Mabel Lake Road KM 10 to KM 59

The Regional District of North Okanagan is asking all residents to keep a safe distance from KM 10 – 59 on the Mabel Lake FSR in order to allow BC Forestry crews space in battling the wildfires.

An Area Restriction Order was put in place on Monday August 4, 2018 as a result of fires in the Mabel Lake region. The restriction will remain in place until September 15, 2018 or until the Order is rescinded. In addition to this, a road closure is now in effect along Mabel Lake Road to all recreational traffic from KM 10 (North of Mabel Lake Provincial Park) to KM 59 (at the junction of Highway 1), including all recreational sites along this section of road.

“Our main goal is to ensure the safety of the community, as well as the safety as those protecting it,” stated Mike Fox, General Manager of Community Services. “Closing off sections of Mabel Lake Road will decrease the risk in vehicle collisions due to hazardous road conditions, and also increase the safety of our forestry crews.”

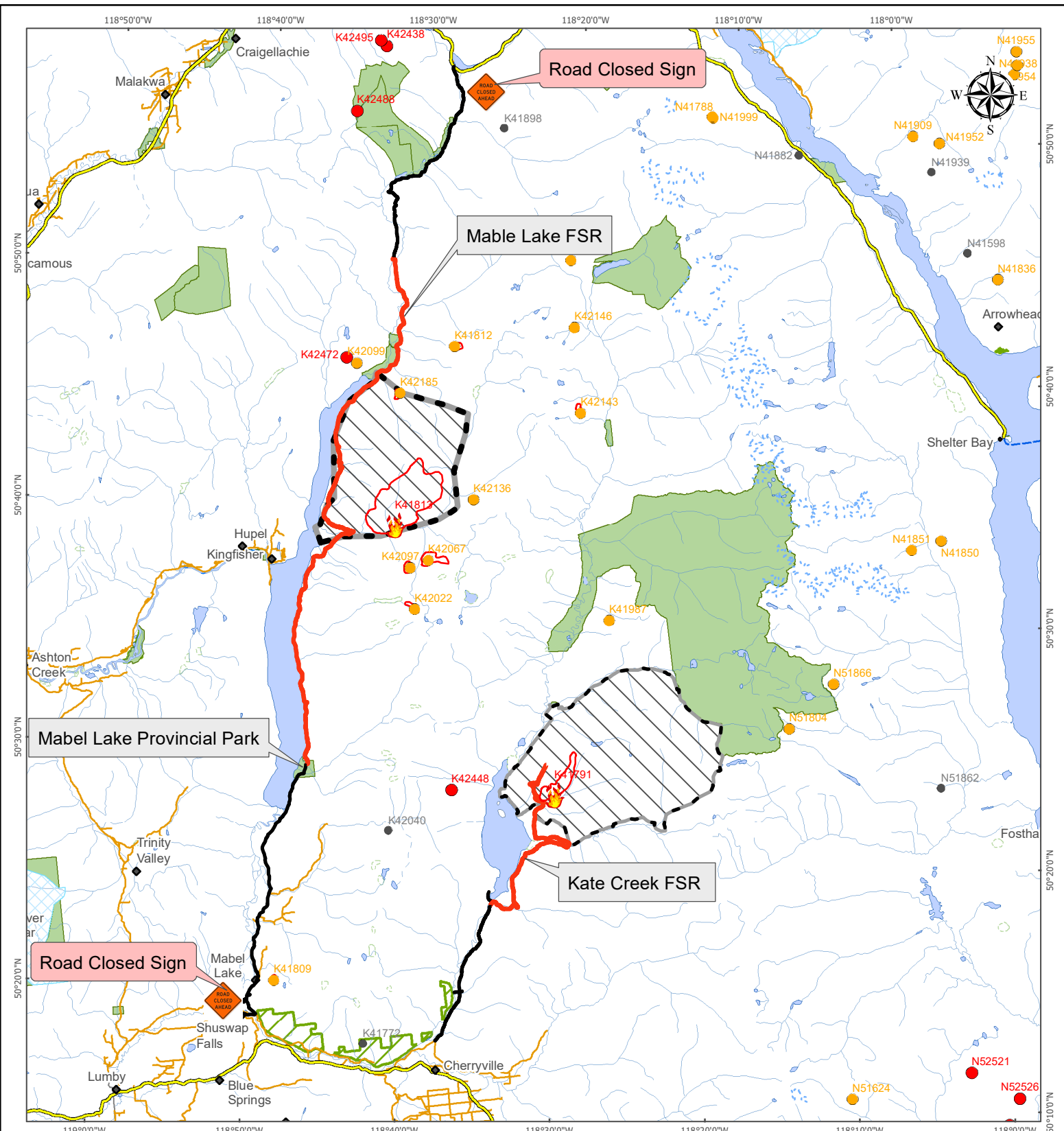
Residents living in the Mabel Lake Holdings community, or other private residences along Mabel Lake Road will not be affected by this closure. The purpose of closing sections of this area is to assist with appropriate staging to face the fires with full road access and increased safety for BC Forestry crews and industry partners.

“The safety of the public and responders is our highest priority, and these roads are narrow with limited visibility”, stated Jane Park, Incident Commander on the Incident Management Team. “These factors, combined with the fire hazards is what has caused these closures. We are working with Compliance and Enforcement Natural Resource Officers to patrol the closed areas with onsite security.”

A map of the Mabel Lake Road closure can be found at www.bcfireinfo.ca or for more information on active wildfires currently effecting the region, please visit www.bcwildfire.ca.

Residents can also receive instant updates on all Emergency Management topics by subscribing to the RDNO email list at www.rdno.ca/subscribe.

For further information, please contact us at 250.550.3700 or communityservices@rdno.ca.



Forest Service Road Closure

Effective Date: August 10, 2016

Mabel Creek Fire (K41813) & Sugar Mountain (K41791)

Area Restriction
Order KFC2018-027 & KFC2018-028

Fire Status	◆ Populated Place
● New	◆ Locality
🔥 Fire of Note	— Forest Service Road (CLOSED!!!)
● Active	— MOTI & FSR Rd To Road Closure
● Not Active	— Main Road
	— Highway
	▭ Fire Perimeter
	▨ Area Restriction

1:400,000

Ministry of Forests, Lands, Natural Resource Operations and Rural Development

BC Wildfire Service

Disclaimer: Wildfire perimeters for the current fire season, including both active and inactive fires, are supplied from various sources. The data is refreshed from operational systems nightly to the public map. Wildfire data may not reflect the current fire situation, and therefore should only be used for reference purposes.

Wildfire data from the incident is updated when practicable and the occurrence of individual fire updates will vary. The information is intended for general purposes only and should not be relied on as accurate because fires are dynamic and circumstances may change quickly. The levels of current fire activity within

Filename: K41813_RoadClosure_8.5x11P
Projection: NAD 1983 BC Environment Albers
Datum: North American 1983
Date/Time Created/Revised: Aug 12, 2018 2010