



## BX PRV Station & Watermain Upgrade Reference No. 2016-E372.12.2

May 10, 2017

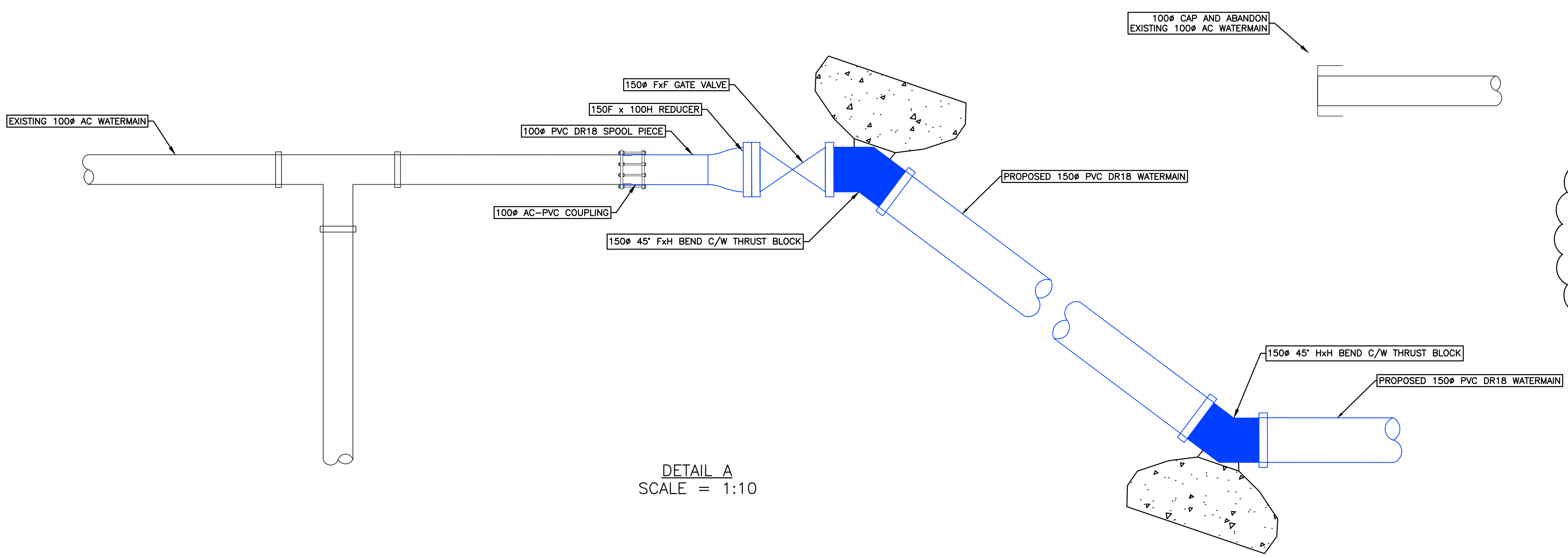
### ADDENDUM NO. 1

*This Addendum forms part of the Contract Documents and is to be read, interpreted and coordinated with all other parts. The cost of all work contained herein shall be included in the Contract Sum. The following revisions supersede the information contained in the original drawings and specifications issued for the above named project to the extent referenced and shall become part thereof.*

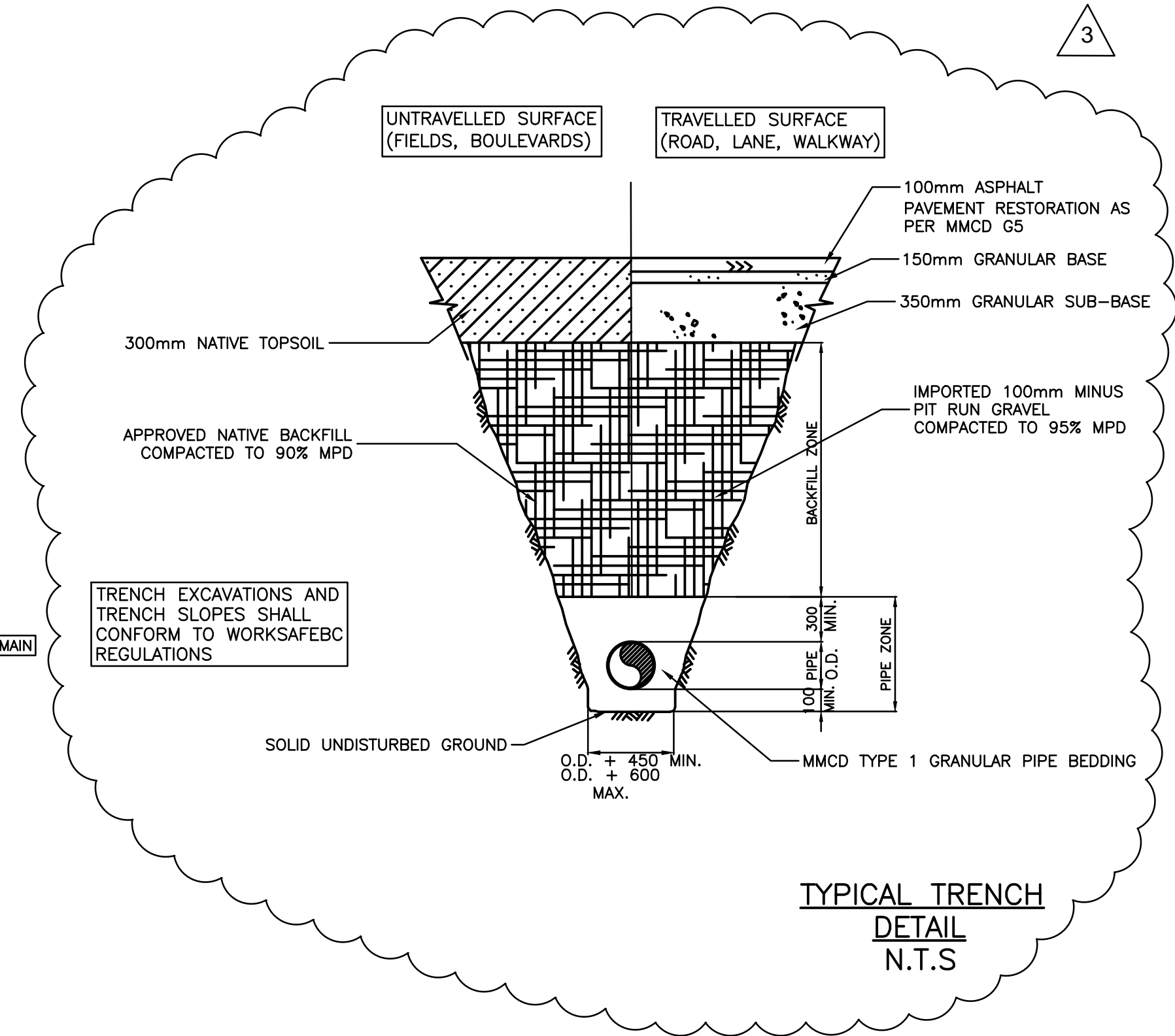
The following list contains questions received to this RFP process and their corresponding answers.

Q1	Is there currently a scheduled site meeting for this opportunity?
A1	<i>There will be a non-mandatory site meeting on <b>Tuesday, May 16<sup>th</sup> at 9AM</b>. The meeting will commence at the PRV site.</i>
Q2	M-01 shows inside dimensions of PRV chamber 4100L X 2000W X 2100H while M-02/03 identify inside dimensions of 4500L X 2000W X 2100H. Which dimensions are correct?
A2	<i>The correct dimensions are 4100L X 2000W X 2100H. Revised drawings are attached.</i>
Q3	Are granular base and granular sub-base, in relation to asphalt restoration, to be paid under SOQ or are they incidental to asphalt restoration?
A3	<i>Asphalt restoration will include restoration of the asphalt above the trench (base/subbase is included in the trench unit rate) as well as a grind and overlay 35 mm of asphalt as per MMCD G5 throughout the rest of the area shown for paving.</i>
Q4	What is the road structure for Silver Star RD and Dedecker RD?
A4	<i>See trench detail included in Addendum 1 drawings.</i>
Q5	For items 15 – 17, what material should be used for imported backfill material?
A5	<i>See trench detail included in Addendum 1 drawings.</i>
Q6	For items 15 – 17, will excavated material from trenching be paid under item 9 (common excavation) or will the excavation and disposal of excavated material be considered incidental to installation of water mains.
A6	<i>Excavation and disposal is part of the watermain as per MMCD. The common ex is only for the PRV site.</i>
Q7	Will lot/driveway restoration be paid under SOQ or will this activity be incidental to water main and servicing installation?
A7	<i>If the restoration driveway is paved, restoration will be under the permanent pavement restoration item. If it is gravel, restoration will be under the watermain unit price.</i>
Q8	Section 2.3 of Piping Systems “.1 All non-threaded piping shall be fabricated from Schedule 40, 316L stainless steel pipe.” The notes on Drawing M-01 Specify Sch.40 304 Stainless Steel, please clarify which is required.
A8	<i>The steel used shall be Sch. 40, 304 stainless steel</i>

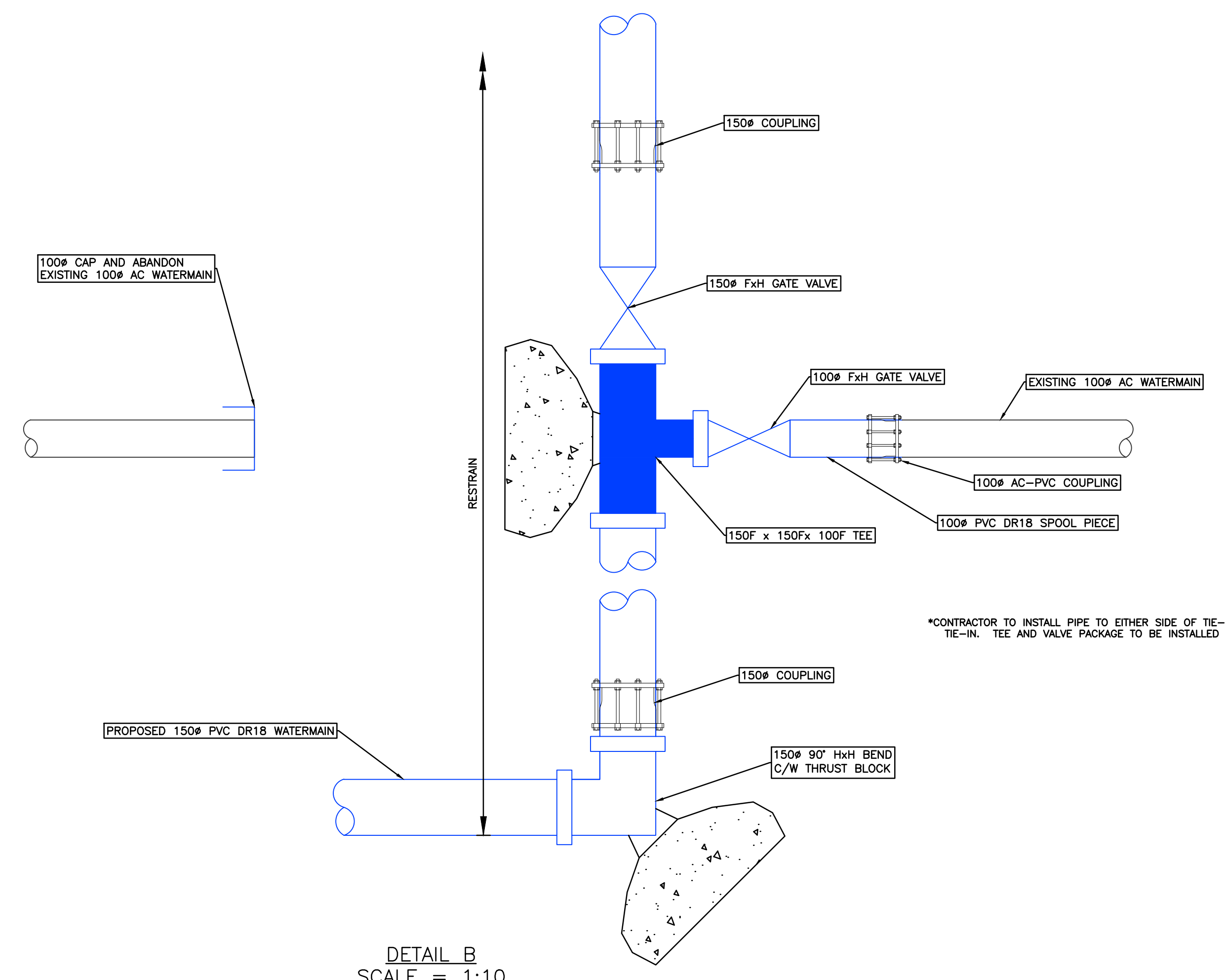
Q9	Section 1.5.2 of Piping Systems “.2 Provide for 2 radiographic inspections and magnetic particle testing for all remaining joints. All sizes and types of pipe welds to be tested at locations identified by the Engineer.” Please clarify quantity or percentage of welds to be tested for quoting purposes.
A9	<i>There are to be 2 radiographic inspections on random weld joints. All remaining joints are to be magnetic particle tested.</i>
Q10	Will there be an extension on the tender close given that the Tuesday follows a long weekend
A10	<i>The Tender Closing Date will not be extended.</i>
Q11	For the tie-in detailed on sheet U-3, should the 250mm gate valve be considered incidental?
A11	<i>Yes, MMCD Payment clause for under pressure branching includes the valve.</i>
Q12	Is the intent for item 35 (concrete encasement) to cover thrust blocks for all items or should the concrete thrust blocks be carried for each line item?
A12	<i>All concrete thrust blocks will be paid under item 35.</i>
Q13	Will the removal and replacement of the existing chain link fence be considered incidental?
A13	<i>Removal of the chain link fence is considered incidental. Installation of a new chain link fence will be paid for under item 13.</i>



DETAIL A  
SCALE = 1:10

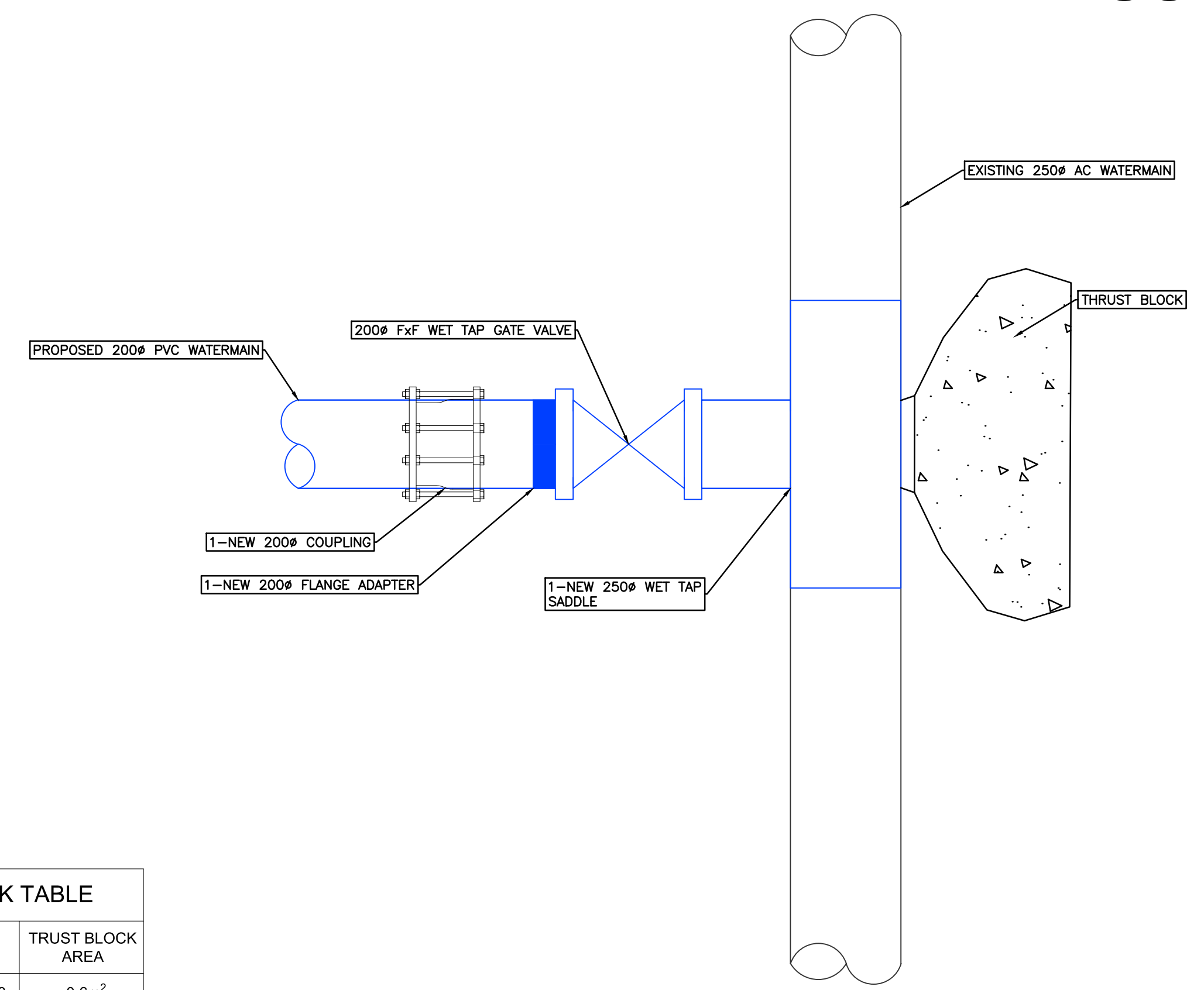


TYPICAL TRENCH  
DETAIL  
N.T.S



DETAIL B  
SCALE = 1:10

THRUST BLOCK TABLE		
FITTING TYPE	SIZE	THRUST BLOCK AREA
TEE	250x250x200	0.6m <sup>2</sup>
BEND 45°	150Ø	0.3m <sup>2</sup>
TEE	150x150x100	0.3m <sup>2</sup>
TEE	400x400x200	1.6m <sup>2</sup>
BEND 45°	200Ø	0.7m <sup>2</sup>



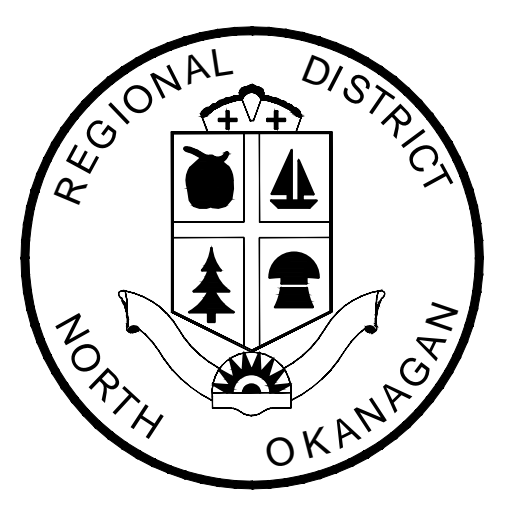
DETAIL C  
SCALE = 1:10

**LEGEND:**

- EXISTING FEATURES**
- SAN LINE
  - WAT LINE
  - GAS LINE
  - LIP OF GUTTER
  - EDGE OF PAVEMENT
  - CENTRE LINE
  - LEGAL LOT
- PROPOSED FEATURES**
- WATER VALVE
  - SANITARY MANHOLE
  - UTILITY POLE
  - GUY WIRE
  - IRRIGATION CONTROL VALVE
  - CURB STOP
  - SIGN
  - DECIDUOUS TREE
  - CONIFEROUS TREE
  - WATER VALVE
  - FIRE HYDRANT
  - WATER CAP

**ONSITE**  
Engineering Ltd.

**INTERIOR OPERATIONS**  
33042 STREET SW - PO BOX 2012  
SALMON ARM, BC V1E4R1  
PH.: 250-832-3366



**REGIONAL DISTRICT OF  
NORTH OKANAGAN**

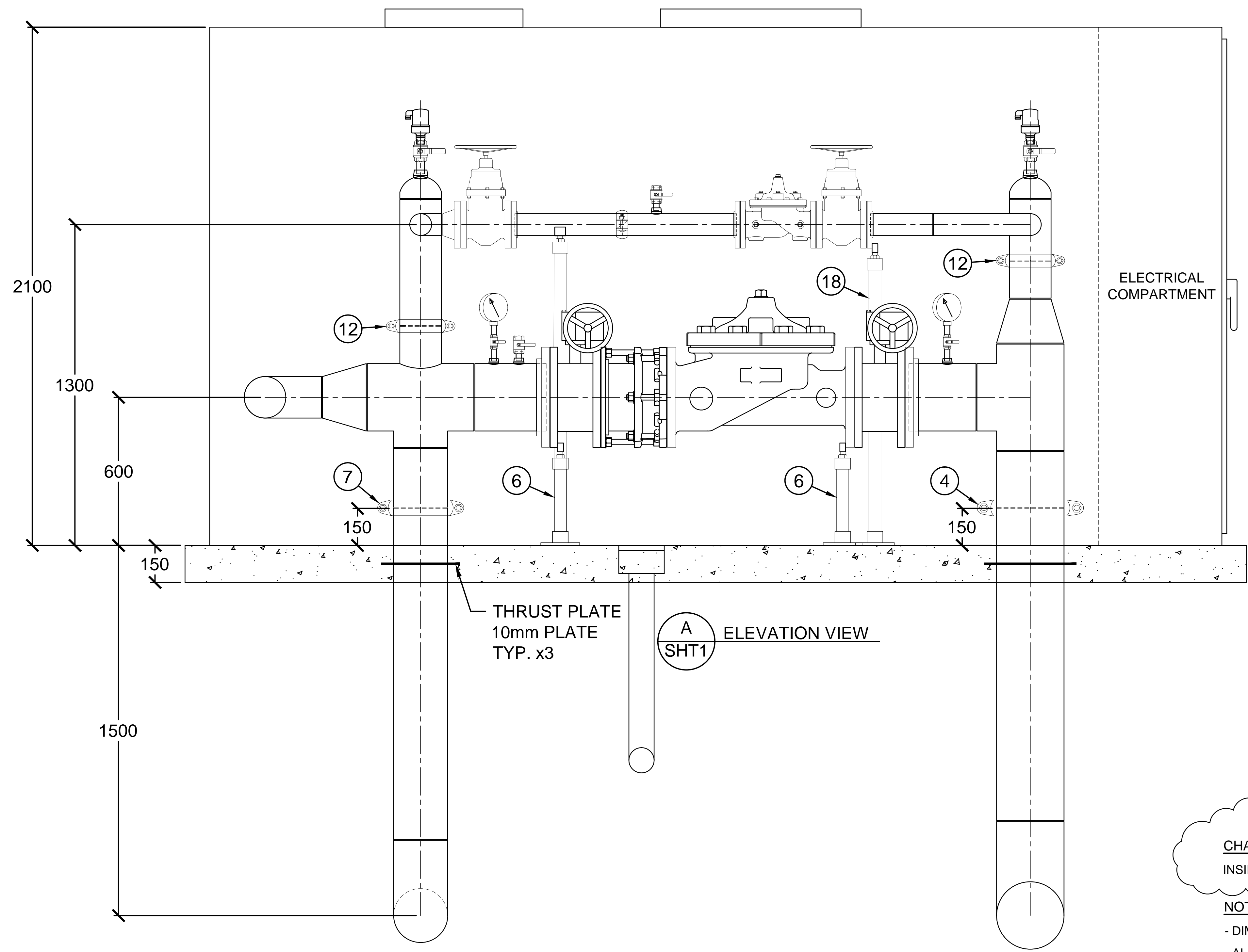
**SILVER STAR ROAD  
WATERMAIN DETAIL**

DRAWING NUMBER

**D-1**

5				
4				
3	5/10/2017	NC	ADDENDUM NO.1	JM
2	3/30/2017	SD	ISSUED FOR TENDER	JM
1	2/22/2017	AB	90% DESIGN	JM
0	1/6/2017	AB	PRELIMINARY DESIGN	JM
No.	Date	By	Revision	Chk'd

Drawn: AB  
Design: JW  
Approved: JM  
Date: FEB 17, 2017  
Scale: H 1:10



THRUST PLATE  
10mm PLATE  
TYP. x3

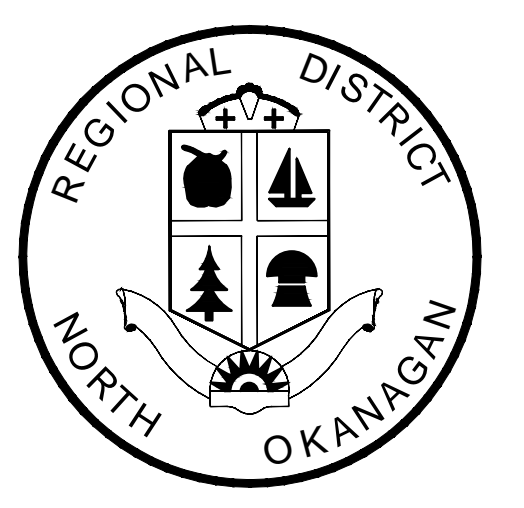
A  
SHT1 ELEVATION VIEW

CHAMBER (VALID KIOSK)  
INSIDE DIMENSIONS: 4100 L x 2000 W x 2100 H

- NOTES
- DIMENSIONS ARE IN MILLIMETERS UNLESS OTHERWISE NOTED
  - ALL ANSI 125#/150# FLANGES
  - ALL PIPES AND FITTINGS TO BE SCH. 40 304 STAINLESS STEEL
  - NUTS AND BOLTS TO BE STAINLESS STEEL w/ RED RUBBER GASKETS

**ONSITE**  
Engineering Ltd.

INTERIOR OPERATIONS  
33042 STREET SW - PO BOX 2012  
SALMON ARM, BC V1E4R1  
PH.: 250-832-3366



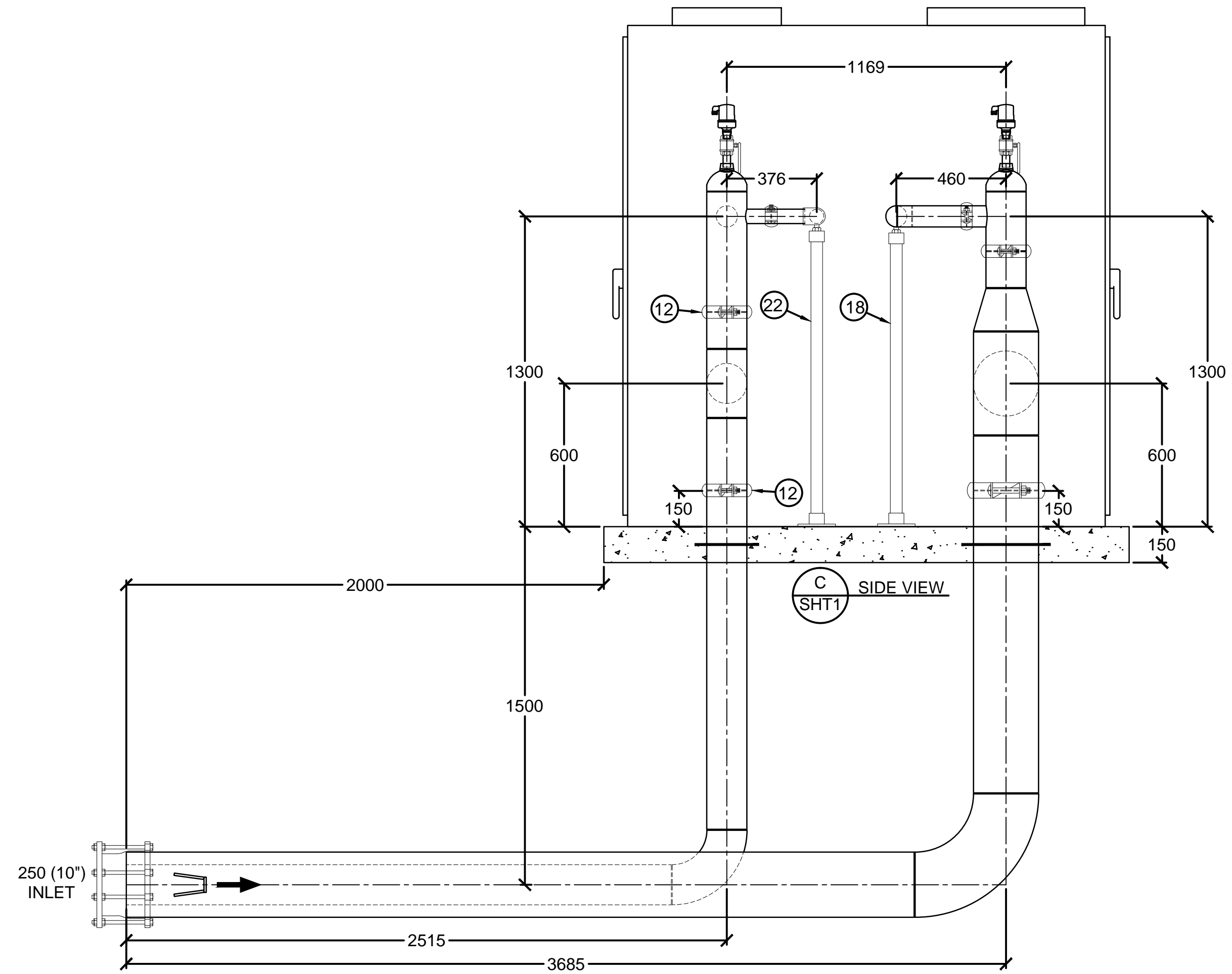
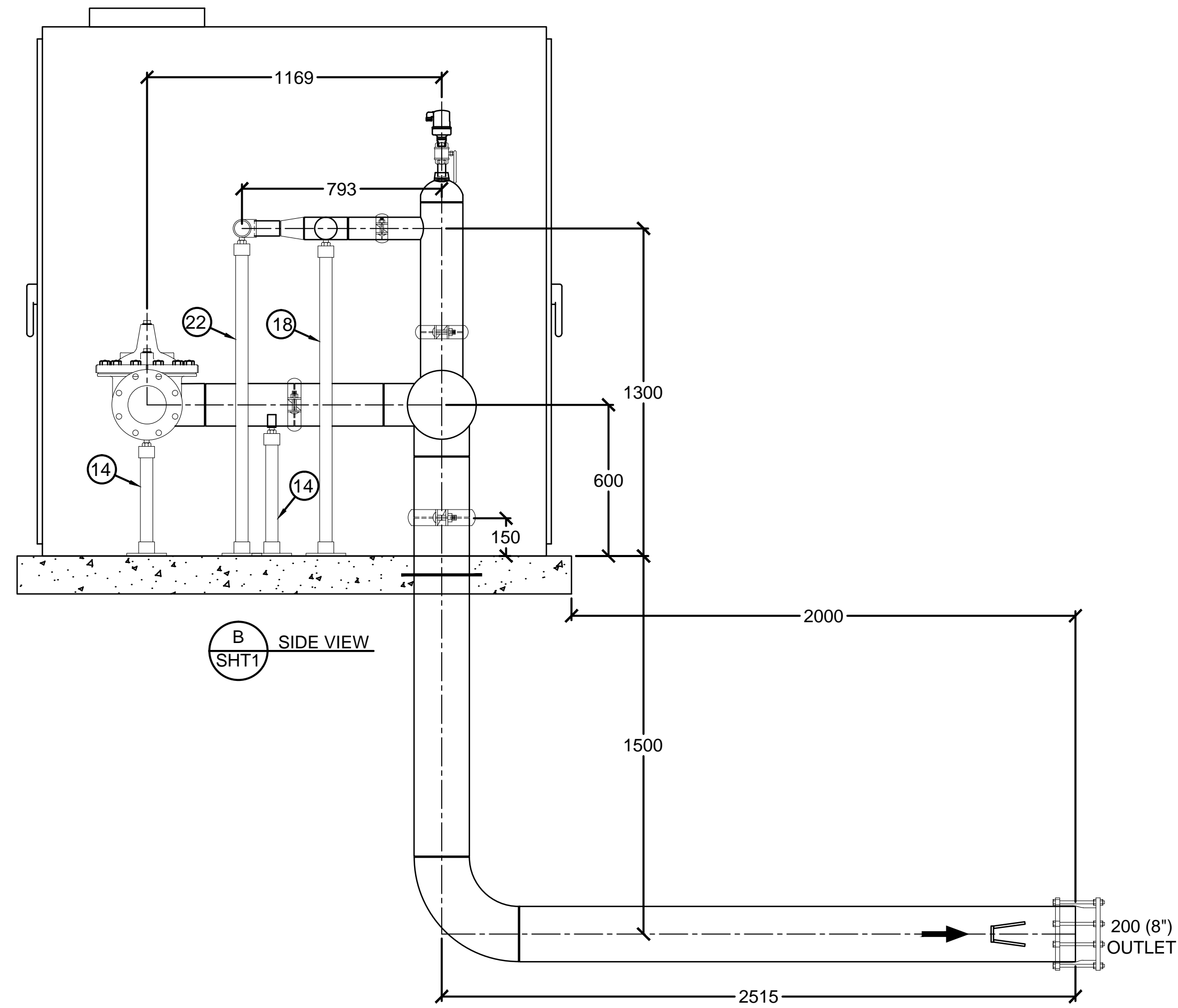
5				
4				
3	10/05/17	NC	ADDENDUM NO.1	JM
2	30/03/17	SD	ISSUED FOR TENDER	JM
1	23/02/17	JW	90% DESIGN	JM
0	06/01/17	AB	PRELIMINARY DESIGN	JM
No.	Date	By	Revision	Chk'd

Drawn: AB  
Design: JM  
Approved: JL  
Date: 02/02/2017  
Scale: 1:10

**REGIONAL DISTRICT OF  
NORTH OKANAGAN**

**PZ615 TO PZ540 PRV STATION  
PRV STATION LAYOUT - SECTION**

DRAWING NUMBER  
**M-02**



3

**CHAMBER (VALID KIOSK)**

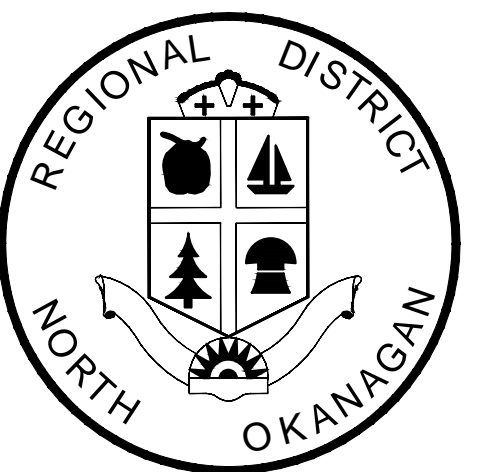
INSIDE DIMENSIONS: 4100 L x 2000 W x 2100 H

**NOTES**

- DIMENSIONS ARE IN MILLIMETERS UNLESS OTHERWISE NOTED
- ALL ANSI 125#/150# FLANGES
- ALL PIPES AND FITTINGS TO BE SCH. 40 304 STAINLESS STEEL
- NUTS AND BOLTS TO BE STAINLESS STEEL w/ RED RUBBER GASKETS

**ONSITE**  
Engineering Ltd.

INTERIOR OPERATIONS  
33042 STREET SW - PO BOX 2012  
SALMON ARM, BC V1E4R1  
PH.: 250-832-3366



**REGIONAL DISTRICT OF  
NORTH OKANAGAN**

**PZ615 TO PZ540 PRV STATION  
PRV STATION LAYOUT - SECTION**

DRAWING NUMBER

**M-03**

No.	Date	By	Revision	Chk'd
5				
4				
3	10/05/17	NC	ADDENDUM NO.1	JM
2	30/03/17	SD	ISSUED FOR TENDER	JM
1	23/02/17	JW	90% DESIGN	JM
0	06/01/17	AB	PRELIMINARY DESIGN	JM

Drawn: AB  
Design: JM  
Approved: JL  
Date: 06/01/2017  
Scale: 1:16