

## Enderby City

<b>1</b>	<b>General</b>
<p>Incorporated in 1905, Enderby has a total land area of 4.23 square km (2006 Census). By highway the City is 13 km north of Armstrong and 20 km south of Salmon Arm. Enderby is in the North Okanagan Regional District.</p>	

<b>2</b>	<b>Population Estimates</b>				<b>Age Distribution</b>				
<b>Annual Estimates</b>					<b>2011 Census</b>			<b>% Distribution, 2011 *</b>	
Year	Enderby	% Change Prev. Year	BC	% Change Prev. Year	Enderby	Male	Female	Enderby	BC
					All ages	1,400	1,535	100.0	100.0
2007	2,869	n/a	4,309,632	n/a	0 - 14	220	200	14.5	15.4
2008	2,890	0.7	4,384,047	1.7	15 - 24	150	135	9.7	12.6
2009	2,910	0.7	4,459,947	1.7	25 - 44	270	285	19.1	26.3
2010	2,923	0.4	4,529,647	1.6	45 - 64	390	470	29.5	30.0
2011	2,936	0.4	4,573,321	1.0	65 +	365	445	27.6	15.7

Source: Statistics Canada (as of July 1, includes estimate of Census undercount)

\* based on published totals, both sexes

**2006 Census Profiles can be found on our Website at <http://www.bcstats.gov.bc.ca/census.asp>**

<b>3</b>	<b>Selected Census Characteristics</b>						
			<b>Enderby</b>			<b>British Columbia</b>	
Characteristics	2001	2006	% Change	% Change	2001	2006	
Population	2,818	2,828	0.4	5.3	3,907,738	4,113,487	
Population (by citizenship)	2,775	2,795	0.7	5.3	3,868,875	4,074,385	
Non-immigrant	2,540	2,580	1.6	2.9	2,821,870	2,904,240	
Immigrant	220	200	-9.1	10.8	1,009,820	1,119,215	
Labour force (15+ yrs.)	1,005	1,265	25.9	8.1	2,059,950	2,226,380	
Employees	815	1,075	31.9	9.2	1,715,600	1,873,050	
Self-employed	140	165	17.9	7.4	291,455	313,000	
Participation rate [ppt.=percentage points]	45.1%	53.0%	7.9 ppt.	0.4 ppt.	65.2%	65.6%	
Unemployment rate	12.4%	9.1%	-3.3 ppt.	-2.5 ppt.	8.5%	6.0%	
Total population 25 to 64 years	1,290	1,310	1.6	6.5	2,144,050	2,284,465	
No certificate, diploma or degree	590	300	-49.2	-40.1	471,470	282,200	
High school certificate or equivalent	185	430	132.4	27.7	462,925	591,275	
Apprenticeship/trades certificate or diploma	250	185	-26.0	-7.4	295,180	273,450	
College, CEGEP or other cert. or diploma	165	255	54.5	11.3	401,760	447,005	
University certificate, diploma or degree	100	145	45.0	34.7	512,715	690,535	
Bachelor's degree	70	55	-21.4	23.0	282,800	347,715	
Census families	810	850	4.9	6.9	1,086,030	1,161,420	
Lone-parent families	175	140	-20.0	4.0	168,420	175,165	
Households	1,210	1,285	6.2	7.1	1,534,335	1,643,150	
1-family households	790	820	3.8	6.1	1,012,925	1,074,850	
Multi-family households	15	15	-	18.4	35,050	41,510	
Non-family households	405	450	11.1	8.3	486,355	526,785	
Median Income (2000 & 2005)	\$ 16,520	\$ 18,656	12.9	12.5	\$ 22,095	\$ 24,867	
Males	\$ 21,211	\$ 23,216	9.5	9.0	\$ 28,976	\$ 31,598	
Females	\$ 13,446	\$ 15,871	18.0	14.0	\$ 17,546	\$ 19,997	
Median Family Income (2000 & 2005)	\$ 34,936	\$ 43,804	25.4	20.0	\$ 54,840	\$ 65,787	
Economic Families	825	840	1.8	6.5	1,044,850	1,112,810	
2001 Incidence, low income    2006 Prevalence, low income	20.4%	13.2%	-7.2 ppt.	-0.6 ppt.	13.9%	13.3%	
Unattached persons, 15+	450	480	6.7	4.7	576,825	603,880	
Incidence, low income	34.8%	51.5%	16.7 ppt.	-1.4 ppt.	38.1%	36.7%	
Population in private hh.	2,750	2,780	1.1	5.1	3,785,270	3,978,215	
Incidence, low income	24.7%	21.8%	-2.9 ppt.	-0.5 ppt.	17.8%	17.3%	
Dwellings	1,210	1,285	6.2	7.1	1,534,335	1,643,150	
Owned	825	955	15.8	12.5	1,017,485	1,145,045	
Rented	390	330	-15.4	-3.6	512,360	493,995	
Average gross rent	\$ 657	\$ 601	-8.5	10.4	\$ 750	\$ 828	
Average owners' payments	\$ 555	\$ 674	21.4	17.1	\$ 904	\$ 1,059	
Avg. value, owned dwell.	\$ 121,613	\$ 199,331	63.9	81.5	\$ 230,645	\$ 418,703	

Source: Statistics Canada. Notes: incomes are for 2005 and 2000; rent/owner's payments are restricted to non-farm, non-reserve private dwellings.

## Enderby City

4		Labour Force by Industry (NAICS)					
		Enderby			BC	% Distribution, 2006	
Industry		2001	2006	% Change	% change	Enderby	BC
Total labour force		1,000	1,265	26.5	8.1	100.0	100.0
Industry - Not applicable		30	25	- 16.7	- 26.6	2.0	1.5
<b>All industries (Experienced LF)</b>		975	1,240	27.2	8.9	98.0	98.5
111-112 Farms		25	35	40.0	5.2	2.8	1.8
113 Forestry and logging		25	10	- 60.0	- 10.0	0.8	1.0
114 Fishing, hunting and trapping		-	-	-	1.3	-	0.2
1151/2 Support activities for farms		-	-	-	11.3	-	0.1
1153 Support activities for forestry		10	-	- 100.0	- 21.5	-	0.3
21 Mining and oil and gas extraction		-	10	-	42.6	0.8	0.9
22 Utilities		10	-	- 100.0	- 3.4	-	0.5
23 Construction		155	170	9.7	39.9	13.4	7.5
31-33 Manufacturing		125	160	28.0	- 2.7	12.6	8.5
311 Food manufacturing		10	15	50.0	3.6	1.2	1.0
321 Wood product manufacturing		45	20	- 55.6	- 16.1	1.6	1.7
322 Paper manufacturing		-	-	-	- 13.5	-	0.6
41 Wholesale trade		25	85	240.0	11.6	6.7	4.1
44-45 Retail trade		95	125	31.6	6.9	9.9	11.2
441 Motor vehicle and parts dealers		30	-	- 100.0	9.0	-	1.1
445 Food and beverage stores		15	55	266.7	8.4	4.3	2.9
448 Clothing & clothing accessories		10	10	-	9.2	0.8	1.1
452 General merchandise stores		20	20	-	6.5	1.6	1.2
48-49 Transportation & warehousing		60	25	- 58.3	0.6	2.0	5.2
51 Information and cultural industries		10	15	50.0	- 5.3	1.2	2.6
52 Finance and insurance		25	25	-	4.5	2.0	3.8
53 Real estate & rental/leasing		20	40	100.0	22.1	3.2	2.3
54 Prof'sonal, scientific & tech. serv.		15	70	366.7	18.6	5.5	7.3
55 Mgmt. of companies/ent'prises		10	-	- 100.0	126.6	-	0.1
56 Admin+support, waste mgmnt srv.		55	25	- 54.5	20.4	2.0	4.4
61 Educational services		90	55	- 38.9	9.2	4.3	6.9
62 Health care and social assistance		60	150	150.0	6.5	11.9	9.6
71 Arts, entertainment and recreation		25	-	- 100.0	11.3	-	2.3
72 Accommodation and food services		65	105	61.5	7.7	8.3	8.1
721 Accommodation services		25	15	- 40.0	2.5	1.2	1.7
722 Food services & drinking places		35	90	157.1	9.2	7.1	6.4
81 Other services (excl. public admin.)		65	60	- 7.7	11.8	4.7	4.9
91 Public administration		20	50	150.0	- 2.0	4.0	5.0
Special Aggregations	Agriculture, Food and Beverage	40	55	37.5	5.8	4.3	2.9
	Fishing and Fish Processing	-	-	-	- 3.3	-	0.5
	Logging and Forest Products	80	30	- 62.5	- 14.7	2.4	3.7
	Mining and Mineral Products	15	70	366.7	17.1	5.5	2.1

Source: Statistics Canada. Industry according to NAICS version used in each census. Unpublished data.

5		Business Locations- Number of Firms by Employment Size Range								
		Firms with no employees		Firms with employees		% change	Vernon CA			
		Vernon CA	BC	Vernon CA	BC	Vernon CA	1 to 19	20 to 49	50-199	200 Plus
2008		2,455	185,879	2,501	175,003	-	2,240	163	87	11
2009		2,510	186,541	2,508	176,124	0.3	2,243	169	85	11
2010		2,611	194,349	2,468	175,913	- 1.6	2,199	180	78	11
2011		2,587	195,290	2,464	173,589	- 0.2	2,215	168	70	11

Source: Business Register, Statistics Canada. In some areas, boundary changes/geocoding changes may cause large changes.

6		Municipal Residential Taxes and Charges on a Representative House					
		Enderby					
		House Value		Taxes & Charges			
Year	\$	% change	\$	% change			
2008	255,517		2,571				
2009	253,461	-0.8	2,630	2.3			
2010	256,596	1.2	2,728	3.7			
2011	253,284	-1.3	2,768	1.5			
2012	239,124	-5.6	2,776	0.3			

Year	House Value	Taxes & Charges
2008	100	100
2009	~102	~100
2010	~105	~100
2011	~102	~98
2012	~95	~95

Source: Ministry of Community, Sport & Cultural Development [http://www.cd.gov.bc.ca/lgd/infra/statistics\\_index.htm](http://www.cd.gov.bc.ca/lgd/infra/statistics_index.htm) (No RD level figures)

## Enderby City

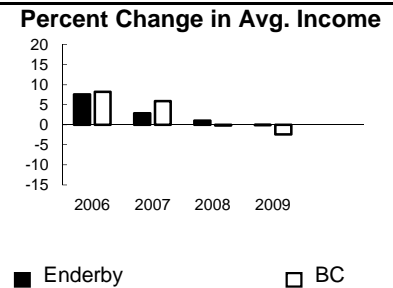
7	Values of Building Permits									
	Year	Residential			Non-Residential			Total		Year
		Number of Units	Value \$'000		Value \$'000		Value \$'000			
	Enderby	BC	Enderby	BC	Enderby	BC	Enderby	BC		
2007	8	40,932	1,311	8,611,723	35	3,932,968	1,346	12,544,691	2007	
2008	6	30,110	1,659	6,899,289	1,187	3,677,866	2,846	10,577,155	2008	
2009	6	18,607	1,250	4,491,075	1,060	3,138,810	2,310	7,629,885	2009	
2010	15	28,984	2,961	6,705,888	9,111	3,017,921	12,072	9,723,809	2010	
2011	6	25,745	1,473	6,113,406	15	3,136,361	1,488	9,249,767	2011	

Source: Statistics Canada

Note: Detailed non-residential permits data can be found on our Website: www.bcstats.gov.bc.ca

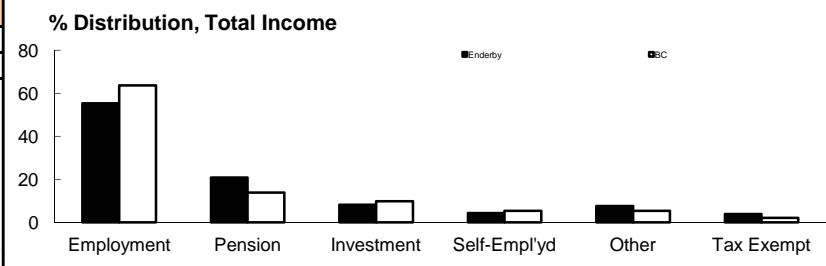
A dash can indicate a nil report, a value of less than \$500, or non-reporting. P indicates 'preliminary'.

8	Personal Taxation Statistics					Percent Change in Avg. Income	
	Total Income of All Returns						
	Year	All Returns (number)	Average Income (\$)		% Change avg. income		
	Enderby	BC	Enderby	BC	Enderby	BC	
2005	4,930	3,154,090	26,561	35,601	n/a	n/a	
2006	4,970	3,165,750	28,578	38,523	7.6	8.2	
2007	5,230	3,287,750	29,392	40,802	2.8	5.9	
2008	5,190	3,383,640	29,695	40,736	1.0	-0.2	
2009	5,100	3,406,860	29,685	39,754	0.0	-2.4	



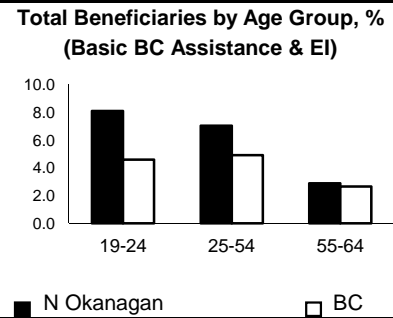
Taxation data available at: <http://www.bcstats.gov.bc.ca/data/dd/income.asp>

9	Source of Total Income 2009			% Distribution, Total Income						
	Employment	Enderby		Pension	Investment	Self-Emply'd	Other	Tax Exempt	Enderby	BC
		\$Thousands	% of Total							
Employment	83,734	55.3	63.7							
Pension	31,473	20.8	13.8							
Investment	12,347	8.2	9.8							
Self-Employed	6,586	4.4	5.3							
Other	11,424	7.5	5.3							
Tax Exempt	5,827	3.8	2.0							
Total	151,392	100.0	100.0							



Source: Canada Revenue Agency. Areas are defined by postal codes and may not match municipal boundaries.

9	Dependency on the Safety Net						Total Beneficiaries by Age Group, % (Basic BC Assistance & EI)		
	Percentage of Population by Age Receiving Benefits - September 2009								
	Age Group	BC Basic* Income Assistance Recipients (%)		Employment Insurance Beneficiaries (%)		Total of BC Basic Income Assistance & EI Beneficiaries (%)		19-24	25-54
N Okanagan		BC	N Okanagan	BC	N Okanagan	BC			
Under 19	3.4	2.7	4.9	2.6	8.1	4.6			
19-24	3.4	2.1	4.7	3.1	7.0	4.9	8.0	4.5	
25-54	2.4	1.9	2.2	2.0	2.9	2.6	7.0	5.0	
55-64	0.7	0.7	4.1	2.8	6.1	4.4	3.0	2.5	2.5
19-64	2.1	1.7							



\* On temporary assistance only. Excluded are those on Continuous Assistance, aboriginals living on reserve, seniors/OAS, & children living with relatives.

Source: BC Stats (using administrative files from the BC Ministry of Housing & Social Development, and Human Resources & Social Development Canada)

Note: EI Beneficiaries reports now include regular, fishing and employment benefits, work sharing and support measures. The reports exclude sickness, maternity and parental benefits.

10	Business Formations and Failures								
	Incorporations			Bankruptcies					
	Number		Year	Vernon		Thompson/Okanagan DR		BC	
Enderby	BC	Business		Consumer	Business	Consumer	Business	Consumer	
2007	7	34,036	2005	17	120	n.a.	n.a.	786	8,168
2008	9	30,085	2006	20	93	120	913	585	7,020
2009	7	26,431	2007	10	107	97	874	470	6,651
2010	10	30,305	2008	14	119	92	1,014	454	7,293
2011	5	30,844	2009	5	181	66	1,573	380	10,639

Source: BC Ministry of Finance

Source: Office of the Superintendent of Bankruptcy, Government of Canada

Incorporations are counted in municipality of the registered office address which may differ from the actual business location.

Note: Bankruptcy is by urban postal code forward sortation area and is counted where it is filed.