

REGIONAL DISTRICT OF NORTH OKANAGAN

ELECTORAL AREAS B & C
OFFICIAL COMMUNITY PLAN
Schedule B2 - Swan Lake / BX
General Land Use

To Accompany Official Community Plan
Plan Bylaw No. 2626, 2014.

LEGEND

- ALR
- First Nations
- Map Sheet Boundaries
- OCP Designations**
- Agricultural
- Commercial
- Country Residential
- Industrial
- Large Holding
- Non Urban
- Parks
- Residential
- School
- Small Holding
- Transportation Corridor
- Resource Use

Schedule "B" to accompany Regional District of North Okanagan "Electoral Areas "B" and "C" Official Community Plan Bylaw No. 2626, 2014"

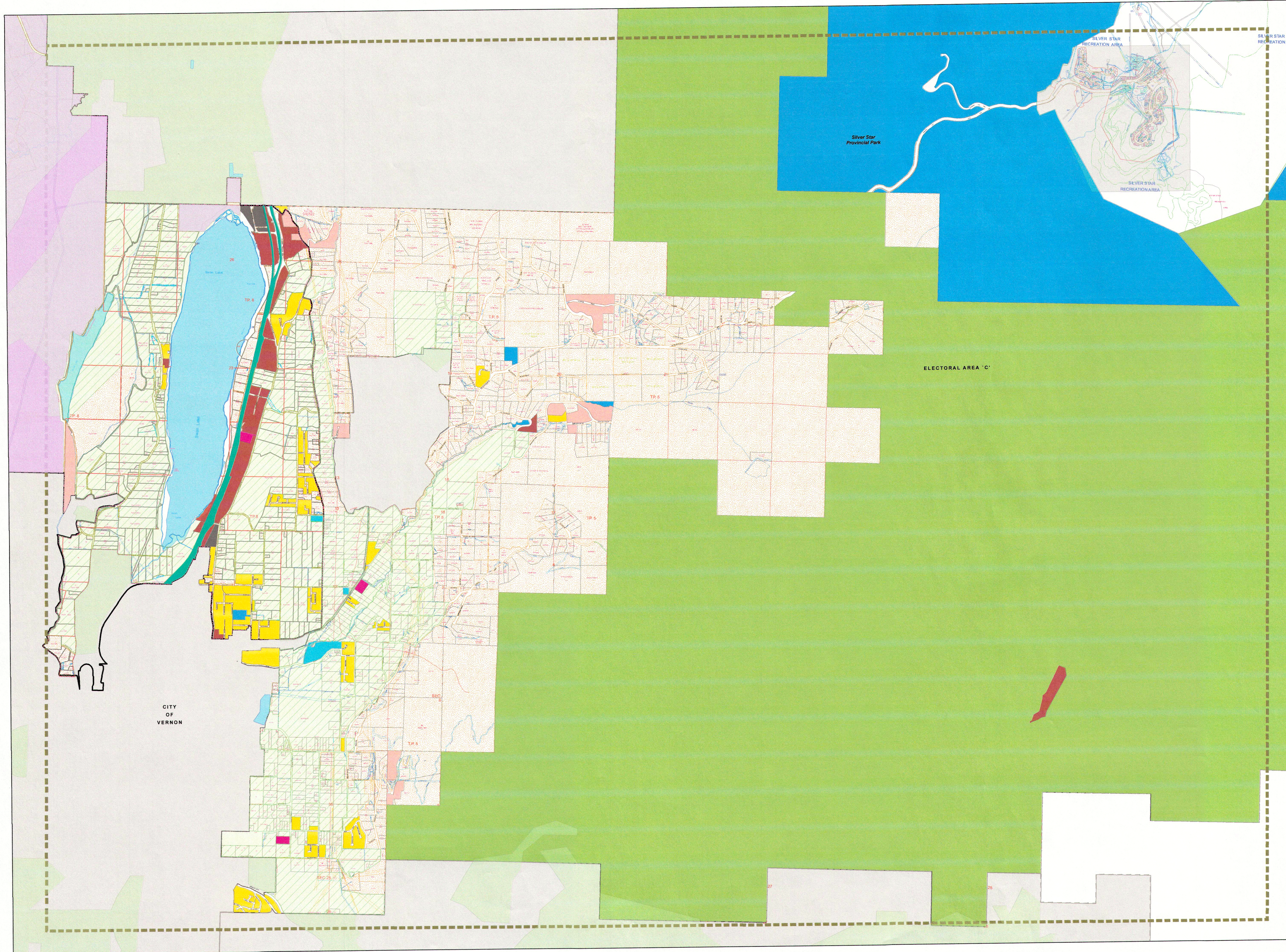
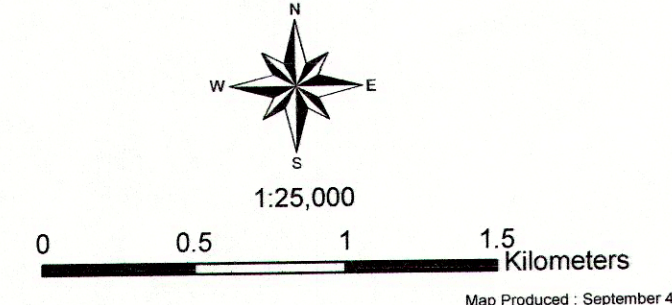
I hereby certify the foregoing to be a true and correct copy of Schedule "B" attached to and forming part of Bylaw No. 2626, 2014 cited as "Electoral Areas "B" and "C" Official Community Plan Bylaw No. 2626, 2014" as ADOPTED the Board of Directors on the 3rd day of September, 2014.

Dated at Coldstream, BC this 8th day of September, 2014.

Corporate Officer

Note:
The Agricultural Land Use Designation is generally consistent with ALR boundaries. As this is a representation of ALR designations, refer to the maps retained by the Agricultural Land Commission for exact boundaries.

Designations within the area of Schedule B1 / B2 / B3 shown on the Schedule B are for information only. Official designation for the areas of Schedule B1 / B2 / B3 are shown on those schedules.



CITY OF VERNON

ELECTORAL AREA "C"