

LEGEND:

- C.1** General Commercial
- C.2** Highway and Tourist Commercial
- C.3** Neighbourhood Commercial
- C.4** Recreation Commercial
- C.5** Service Commercial
- C.6** Rec. Vehicle Campground/Resort Commercial
- I.1** Light Industrial
- I.2** General Industrial
- I.3** Industrial Park
- I.4** Agricultural Industrial
- I.5** High-Tech Business
- R.1** Residential Seasonal Single Family
- R.2** Residential Two Family
- R.3** Residential Apartment and Multi-Family
- R.4** Residential Manufactured Home Subdivision
- R.5** Residential Manufactured Home Community
- R.6** Residential Seasonal Single Family
- R.7** Residential Large Lot Housing with Suite or Two Family Dwelling Zone
- S.H** Small Holding
- C.R** Country Residential
- N.U** Non-Urban
- L.H** Large Holding
- S.1** Spray Irrigation
- S.2** Residential Attendance Program
- S.3** Community Park and Public Use
- CD.1** Trails at Enderby Comprehensive Development Zone
- CD.2** Fairhaven Ministries Association Comprehensive Development Zone
- CD.3** Mabel Lake Golf and Country Club Comprehensive Development Zone
- CD.4** Seasonal Single Family Recreation Comprehensive Development Zone

Land Use Contract

BYLAW AMENDMENTS:
Consolidated with amendments for convenience only.

- BYLAW# 1966, 2004
- BYLAW# 2060, 2005
- BYLAW# 2059, 2005
- BYLAW# 2756, 2017
- BYLAW# 2760, 2018
- BYLAW# 2875, 2020

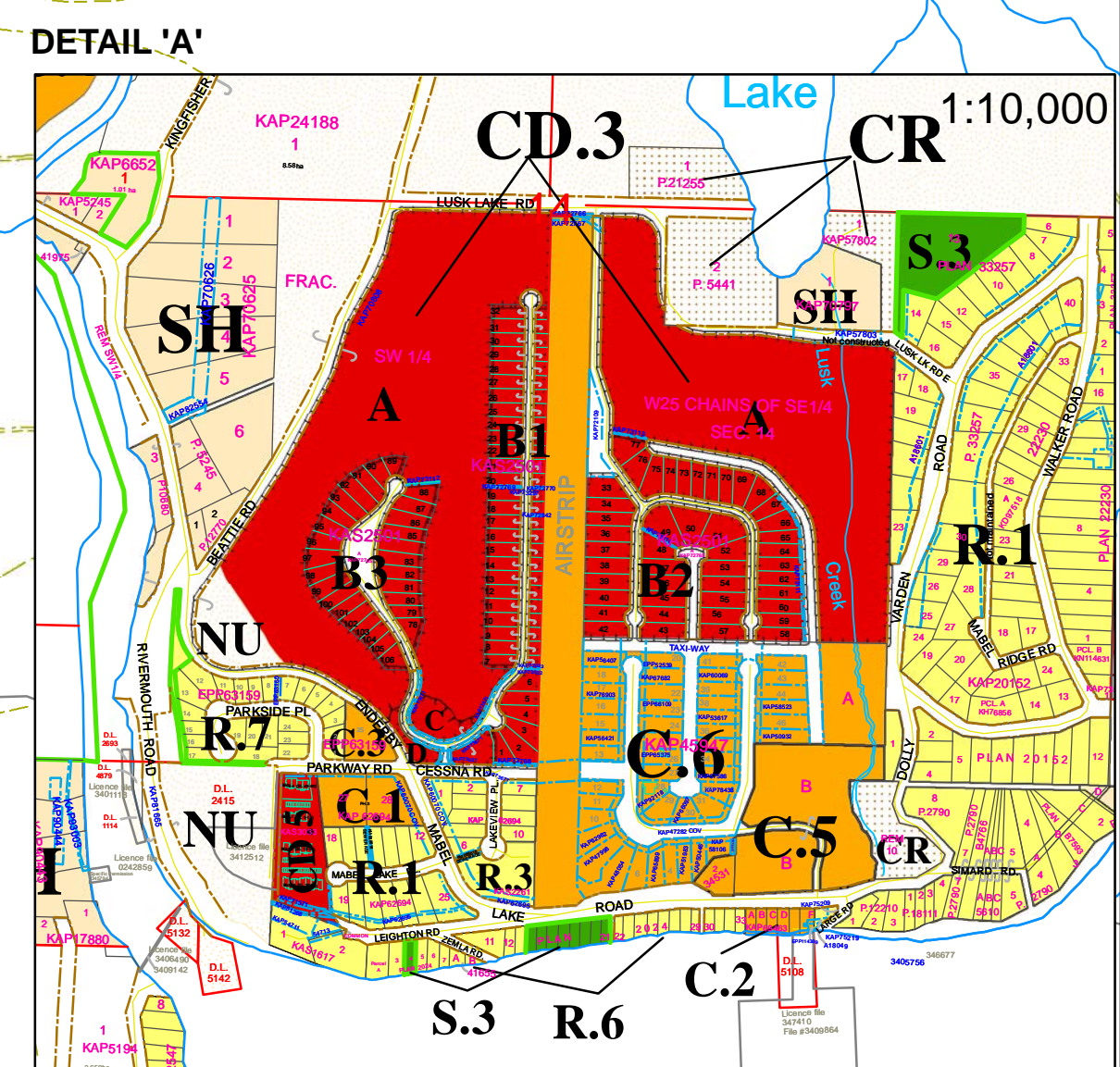
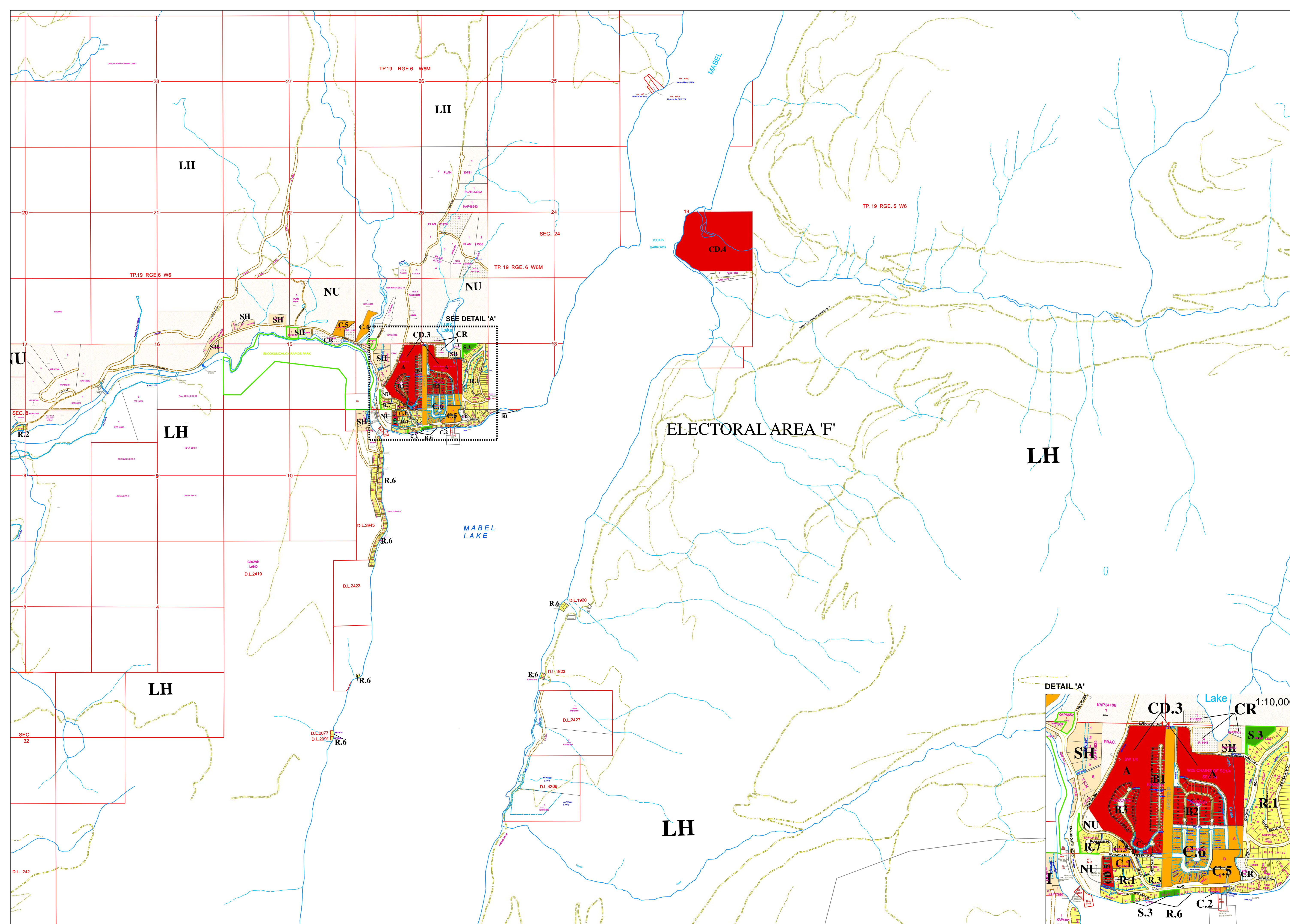
ZONING

ADOPTED: JUNE 7, 2004

Schedule "A" to accompany Regional District of North Okanagan "Zoning Bylaw No. 1888,2003"

I hereby certify this to be a true and correct copy of Schedule "A" attached to and forming part of the Regional District of North Okanagan "Zoning Bylaw No. 1888,2003".

Corporate Officer

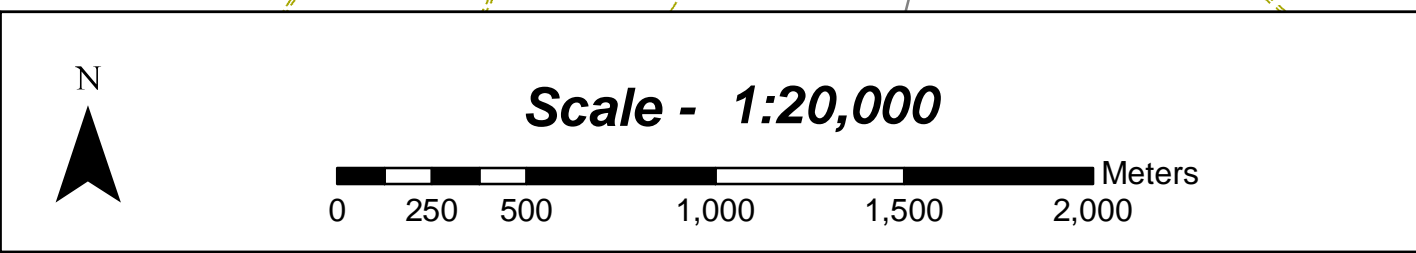


This document is a composite legal drawing. Several information sources have been used to create this drawing including the B.C. Land Titles Office, The Regional District, local Municipal Governments and a number of Provincial ministries. As such the Regional District of North Okanagan assumes no responsibility for the accuracy or completeness of this drawing. The original data sources should be contacted to verify information as needed.

Path: Z:\Project Drawings\ZONING BL1888\03 MAPS_AREA_FLandscape_F7_Zoning_F_mxd

Last Revised:
April 2021

REGIONAL DISTRICT OF NORTH OKANAGAN



Drawing Location:
**AREA F,
MABEL LAKE**

B.C.G.S. MAPSHEET:
MAP SHEET F7