



# REGIONAL DISTRICT NORTH OKANAGAN

---

## 2022 Annual Report: Greater Vernon Diversion and Disposal Facility

Ministry of Environment Operational Certificate No.  
MR 15286

**SUBMITTED TO:**

Ministry of Environment and Climate Change Strategy, Online Portal

**PREPARED BY:**

Dale Danallanko, Diversion and Disposal Facilities Operations Manager  
Nicolas Schulz, Solid Waste Technician  
Danika Barkhouse, Environmental Services Clerk

**DATE:**

April 2023

## **TABLE OF CONTENTS**

1. EXECUTIVE SUMMARY .....	1
2. INTRODUCTION .....	2
3. QUANTITIES DISPOSED AND DIVERTED.....	2
Table 1 - Quantities of Material Recycled or Reused from GVDDF in 2022 .....	3
4. OPERATIONAL STATUS UPDATE .....	3
4.1 OPERATIONS .....	4
4.2 INSPECTIONS.....	5
4.3 EMERGENCIES .....	6
4.4 MAINTENANCE AND REPAIRS .....	6
5. TOPOGRAPHIC MAP.....	6
6. IN PLACE MATERIAL SUMMARY AND SITE LIFE .....	7
7. DESIGN & PERFORMANCE REQUIREMENTS.....	7
7.1 DESIGN, OPERATIONS AND CLOSURE PLAN (DOCP).....	7
7.2 GROUNDWATER & SURFACE WATER QUALITY PROTECTION.....	7
7.3 HYDROGEOLOGY AND HYDROLOGY REVIEW.....	7
7.4 BUFFER ZONES .....	8
8. MONITORING DATA .....	8
9. SPRAY IRRIGATION UPDATE.....	8
10. LANDFILL GAS MONITORING.....	9
Table 2 - Summary of CH <sub>4</sub> Readings from Landfill Gas Monitoring Wells.....	9
Figure 1 - Greater Vernon DDF Landfill Gas Monitoring Wells.....	10
11. PLANNED OPERATIONAL ACTIVITIES .....	11
12. FINANCIAL.....	11
13. SOLID WASTE MANAGEMENT PLAN PROGRESS.....	11
14. WILDLIFE .....	11
15. ENVIRONMENTAL COMPLAINTS .....	12
16. TRAINING PROGRAMS .....	12
17. NON-COMPLIANCE WITH THE OPERATIONAL CERTIFICATE.....	12
18. ADDITIONAL INFORMATION.....	13

## **1. EXECUTIVE SUMMARY**

The 2022 Annual Report summarizes and updates facility operation, development, and environmental monitoring for the reporting period of 2022 in compliance with Operational Certificate MR 15826 (OC). This annual report outlines any new information that could affect the authorized works, plans, assessments, surveys, programs and reports.

In 2022, approximately 33,697 tonnes of waste was landfilled at the GVDDF, which is an 8.0% increase from 2021. Based on the Design, Operations and Closure Plan updated in 2017, the GVDDF is estimated to reach design capacity in approximately 2059. In 2010, the RDNO purchased the parcel of land adjacent to the GVDDF and a conceptual design for site expansion was developed in 2015 by XCG Consultants in order to determine the potential increase in site life and the expansion costs. To authorize future disposal of Municipal Solid Waste (MSW) in this possible lateral expansion, additional site investigations and preliminary conceptual design work was undertaken starting in 2021 which continued in 2022.

A number of commodities are segregated at the GVDDF and are either shipped off site to be recycled or re-used on site. These materials include yard and garden waste (which is accepted free of charge and is composted at the Regional Yard Waste Composting Facility located at the GVDDF), crushable materials (concrete, asphalt, masonry), wood waste, tires, propane tanks, scrap metal, etc.

Environmental monitoring in 2022 included groundwater and surface water sampling and landfill gas monitoring. Water quality data collected as part of the environmental monitoring program is compared to historical values to monitor trends and to determine potential site impacts to groundwater. The 2022 Environmental Monitoring Report is provided as Attachment A.

Regular facility operations at the GVDDF remained unchanged in 2022. However, additional operational and planning activities that took place at the GVDDF in 2022 include continued investigation of options for leachate management and storage, pre-design work for the future installation of an additional inbound scale, additional work related to the potential long term lateral expansion of the GVDDF fill area, Phase 2 of a waste composition study and initiation of a DOCP update. Total operation and maintenance expenditures at the GVDDF during 2022 were \$1,859,912 and approximately \$6,148 was spent on environmental monitoring laboratory services (RDNO staff labor costs to collect samples and report results is not included).

## **2. INTRODUCTION**

The Greater Vernon Diversion and Disposal Facility (GVDDF), owned by the Regional District of North Okanagan (RDNO), is located within Electoral Area “B” at 120 Birnie Road, approximately 5 km south of the City of Vernon (centre).

The legal description of the property on which current GVDDF operations are situated is Lot A, Plan KAP83248, Section 16, Township 9, Osoyoos Division Yale District. In 2012 the RDNO purchased the adjacent 40 ha parcel (Lot B, Plan KAP83248) for potential future expansion of the GVDDF. The site is approximately 60 hectares and serves the communities of Vernon and Coldstream and the surrounding Electoral Areas (B and C). The location plan is presented as part of the 2022 Environmental Monitoring Report, Attachment A.

The GVDDF was operated by GFL Environmental Inc. under a contract with the RDNO during 2022. The Scale Attendant and Inspector positions at the GVDDF were filled by RDNO staff.

The GVDDF has a maximum permitted filling rate of 45,000 tonnes per year. The works authorized are a sanitary landfill, leachate control works, and related appurtenances.

## **3. QUANTITIES DISPOSED AND DIVERTED**

The quantity of MSW disposed (discharged) at the GVDDF in 2022 was 29,595 tonnes, which represents a 12.2% decrease from 2021. This equates to an estimated fill volume of 61,656 cubic metres. The calculated apparent density for this site, as determined in the 2017 DOCP is 0.48 tonnes per cubic metre. The DOCP also lists a target apparent density of 0.70 tonnes per cubic metre to ensure compaction is maximized.

According to 2021 census data and subsequent Stats BC estimates, the population in the service area for the GVDDF (Vernon, Coldstream, Electoral Area B, and Electoral Area C) is 63,475. The per capita disposal rate in 2022 was therefore 0.47 tonnes, representing a decrease from 2021. The per capita disposal rate in this area has been relatively stable for a number of years. When compared with the 1991 per capita filling rate of 1.1 tonnes per capita per year it appears that waste reduction programs in Greater Vernon are effective.

The quantity and types of materials diverted from disposal at the site are listed in the table below.

**Table 1 - Quantities of Material Recycled or Reused from GVDDF in 2022**

<b>Material/Product</b>	<b>Quantity</b>	<b>Units</b>
Crushable Materials	4,980	Tonnes
Wood Waste and Yard Waste	23,036	Tonnes
Scrap Metal	1,367	Tonnes
Refrigeration Appliances	3044 <sup>1</sup>	Units
Mattresses and Box Springs	7,570 <sup>2</sup>	Units
Propane Tanks	3,312	Units

1 – Quantity of refrigerated appliances of which Freon was recovered.

2 – Regional quantity of mattresses and box springs deconstructed and recyclable material diverted.

Drywall has not been recycled since 2017 due to issues related to limited recycling options and the potential presence of asbestos in the material. All new drywall cut ends received in 2022 were once again stockpiled. The RDNO continues to investigate recycling options for new drywall. If these opportunities are not technically or economically feasible, the drywall stockpile will be disposed onsite and any incoming new drywall will be disposed onsite. Used drywall that has been tested and known to contain asbestos is buried in the asbestos disposal cell and covered immediately as per the RDNO’s asbestos handling protocol. All other drywall received at the GVDDF is considered refuse and is disposed. Asphalt shingles have not been recycled since 2020 but has been stockpiled onsite. The RDNO continues to investigate recycling options for asphalt shingles.

#### **4. OPERATIONAL STATUS UPDATE**

This section provides an update on the status of authorized work and related appurtenances, including information on operations, construction, inspections, emergencies, maintenance work and repair activities during 2022. The authorized works and related appurtenances include the following:

- Leachate Control System (including pond, pump station, dam, irrigation system, other collection works such as the intake at the composting facility);
- Landfill Gas Management System (including plant, pipes, wells, condensate structures);
- Surface Water Management System (including ditches, culverts, pipes, manholes, catch basins, outflow structures);
- Filling Plan (including cells built – bases, berms, cover, access roads, stockpile area pads, bunkers, etc.);
- Fencing and Gates (including site security);
- Weigh Scale (including on/off ramps, bypass roads, scale software, building, signage);
- Regional Yard Waste Composting Facility; and

- Environmental Monitoring System (including wells, sample sites, LFG probes as described in Attachment A and the Environmental Monitoring Plan).

#### **4.1 OPERATIONS**

As in previous years the GVDDF operated under the following hours:

“Summer Hours” (March 1 - November 30)

Monday to Friday from 8:00 a.m. to 4:30 p.m.

Saturday and Sunday from 8:30 a.m. to 4:00 p.m.

“Winter Hours” (January 1 - February 28 and December 1 - December 31)

Monday to Friday from 8:00 a.m. to 4:30 p.m.

Saturday 9:30 a.m. to 3:30 p.m.

The GVDDF entrance facilities included a lockable entrance gate, scale house, two vehicle scales (one for inbound traffic and one for outbound traffic), and electronic weighing and reporting software (Auto Scale 2000). Customers using the facility, with the exception of customers dropping off Yard & Garden Waste were required to stop at the scale house and pay the specified disposal fee based on the type and weight of material disposed. All site visitors, suppliers, consultants and contractors were required to check in and out of the site at the scale house to ensure they were familiar with the emergency, health and safety protocols and so that they were all accounted for at the end of the day.

*Municipal Solid Waste Management Bylaw No. 2832, 2019*, establishes fees and sets standards for the use of diversion and disposal facilities owned and operated by the regional district. A copy of the Bylaw is provided as Attachment B.

Filling and waste covering in the upper level continued in accordance with the 2017 Design, Operations and Closure Plan (DOCP) with a focus on completing lifts above the three horizontal Landfill Gas (LFG) collection loops. The Contractor installed side berms prior to filling close to the south slope and maintained access roads to all tipping areas (including diverted material stockpiles). Litter control fencing was installed around filling areas as necessary.

The following commodities were segregated at the GVDDF and shipped off-site for recycling or reused on-site:

- Tires: Passenger and truck tires with and without rims were accepted near the Residential Drop-Off (RDO) and recycled under the Provincial Tire Recycling Program.
- Yard and Garden Waste: yard and garden waste was stockpiled and ground by the RDNO’s grinding contractor. Ground yard and garden waste was composted at the RDNO Regional Yard Waste Composting Facility located at the northwest corner of the site. Class A compost was produced by turning and watering windrows and then screening prior to distribution or use on site.

- Wood Waste: dimensional wood waste (clean and dirty) was stockpiled on both the mid and upper benches of the site and ground by RDNO's grinding contractor on a regular basis prior to being used on site for cover, bio-filtration and aesthetics on finished slopes.
- Propane Tanks: various sizes of tanks (1lb to 40lb) were received and stockpiled. The tanks were removed by a contractor for recertification or recycling.
- White Goods and Other Scrap Metals: refrigeration units were decommissioned and refrigerant removed by a qualified contractor under contract before being added to the scrap metal stockpile. Metals are sold to a recycling contractor. The GVDDF is a Major Appliance Recycling Roundtable (MARR) depot.
- Old Corrugated Cardboard (OCC): OCC is collected in two compactor bins at a location adjacent to the scale house at a Recyclable Materials Drop Center. OCC was then transported to a materials recovery facility (MRF) for processing and marketing.
- Glass Jars and Bottles: glass jars and bottles were collected in a small roll off container situated near the Recyclable Materials Drop Centre. This material was added to the crushable material pile, crushed and used onsite for roads and tipping pads.
- New Drywall: new drywall cut ends are stockpiled, the RDNO continues to investigate recycling options for this material.
- Asphalt Shingles: shingles were collected and stockpiled in a lock block bunker, the RDNO continues to investigate options for this material.
- Concrete and other Crushable Material: crushable material was stockpiled and crushed for use onsite for roads and tipping pads.

More than 81,000 m<sup>3</sup> of Class A compost has been produced since the Regional Yard Waste Composting Facility opened in 2012. Approximately 20,560 m<sup>3</sup> of chipped Yard and Garden Waste was composted at the GVDDF compost facility in 2022. The Class A compost was also provided to GVDDF customers free of charge (via self-loading).

## **4.2 INSPECTIONS**

The following inspection activities took place in 2022:

- Regular operational monitoring and inspection by RDNO staff.

The leachate storage pond water elevation is required to be kept below 594.5 masl to ensure the integrity of the pond is maintained. This elevation was surpassed from March to July in 2022. Over the past number of years, an increase in leachate inflow has been observed. Measures are taken to reduce the leachate storage pond volume as much as possible while following the spray irrigation requirements. A portion of the volume of storm water entering the pond has been redirected in 2018, as part of the entrance upgrade storm water collection system. Enhanced

irrigation measures were implemented in 2019, including irrigating back onto the surface of the pond to increase evaporation.

Once again in the spring of 2022 a small amount of water was found seeping from the ground surface below the toe of the leachate pond dam. This seepage has occurred every spring since 2016, and geotechnical investigations were completed to determine options for controlling the seepage. Investigate work related to leachate storage and management options continued in 2022.

### **4.3 EMERGENCIES**

The following emergencies occurred at the site in 2022 and were resolved as indicated:

- a. Leachate seepage down-gradient from the leachate pond dam
  - Investigations have been underway since this seepage was first discovered in the spring of 2016 (an additional borehole was installed into bedrock on the dam crest)
  - The site is monitored on a monthly basis including dam integrity, water levels in wells below the dam and pond levels)
  - Spray irrigation quantities were increased to lower pond levels as soon as possible based on weather conditions

Emergency Response Procedures will be reviewed and updated as necessary in 2023.

### **4.4 MAINTENANCE AND REPAIRS**

The following maintenance activities and significant repairs were undertaken at the site in 2022:

- Maintenance of infrastructure at the GVDDF was completed as required

## **5. TOPOGRAPHIC MAP**

See Attachment C for topographic map. The attached topographic map is from the aerial survey performed in 2019.



## **6. IN PLACE MATERIAL SUMMARY AND SITE LIFE**

The remaining life of the GVDDF has been evaluated on a number of occasions. The most recent evaluation was completed as part of the 2017 update of the DOCP by XCG Consultants (XCG). In the updated DOCP, XCG re-evaluated the parameters (compaction, cover ratio, etc.) and as of 2017, the facility is estimated to reach design capacity in 2059.

The RDNO purchased a large parcel of land to the west and adjacent to the GVDDF a number of years ago for potential future expansion of the landfill footprint. A conceptual design was developed at the end of 2015 by XCG in order to determine the potential increase in site life and the expansion costs. The costs and additional volume ascertained from the design will be used for planning purposes in the future.

## **7. DESIGN & PERFORMANCE REQUIREMENTS**

### **7.1 DESIGN, OPERATIONS AND CLOSURE PLAN (DOCP)**

The GVDDF DOCP was reviewed and updated in 2017 by XCG. . A further update of the GVDDF DOCP was initiated in 2022, with completion of this work expected in 2023.

### **7.2 GROUNDWATER & SURFACE WATER QUALITY PROTECTION**

BC Approved and Working Water Quality Guidelines have been exceeded in groundwater wells 150 meters from the landfill footprint. These wells are located downgradient from the leachate pond and old salt storage shed. Multiple geotechnical and hydrogeological investigations have been completed to investigate the source of the groundwater impacts at and below the pond dam.

A new higher capacity leachate storage pond preliminary design project is currently underway. It is expected that the new pond will capture the leachate plume downgradient of the current leachate storage pond and that groundwater quality will improve at the wells currently exceeding the BC guidelines. The Environmental Monitoring Report provided as Attachment A contains detailed water quality data.

### **7.3 HYDROGEOLOGY AND HYDROLOGY REVIEW**

The site hydrogeological and hydrological conditions were not assessed in 2022, however in 2017 as part of the DOCP Update, a data review was conducted and the existing conditions updated. The next assessment is included in the GVDDF DOCP update, which was initiated in 2022 with completion of this work expected in 2023.

## **7.4 BUFFER ZONES**

The GVDDF maintains at a minimum a 50 meter buffer zone between the landfill footprint and the landfill site boundary of which the 30 m closest to the landfill site boundary is reserved for natural or landscaped screening (berms and/or vegetative screens). Only the 20 meters closest to the landfill footprint is used for access roads, surface water management works, leachate management, landfill gas management and monitoring works, firebreaks, and other ancillary works as required.

## **8. MONITORING DATA**

The Greater Vernon Diversion and Disposal Facility 2022 Annual Environmental Monitoring Report is provided as Attachment A. The ground and surface water monitoring program is described and monitoring results are provided including the status of sampling locations and recommendations for monitoring program improvements, where necessary. The following list provides the recommendations from the 2022 Annual Report.

1. Continue with the currently established sampling program, and assess trends of exceedances.
2. Evaluate potential trends in leachate indicators in 2023.
3. Continue with the new Leachate Storage Pond project.

## **9. SPRAY IRRIGATION UPDATE**

In 2017, an upgraded pump station and 3 large fiberglass reservoir tanks were installed to allow for automated control of the leachate distribution system. The new system was commissioned in the summer of 2017. The spray irrigation system is inspected regularly and undergoes maintenance as necessary.

The spray irrigation requirements (seasonal irrigation rate, maximum leachate application per irrigation event, frequency of irrigation and soil sampling requirements for the irrigated area) were reviewed and revised by Ruth McDougall, M.Sc., PAg, in 2019.

Between April 2022 and October 2022, 45,887 m<sup>3</sup> of leachate was pumped out of the GVDDF leachate pond and was applied to the south facing slope above the pond, to the compost pad windrows, used for dust control and other non-potable operational purposes in non-public areas of the GVDDF or run through the evaporative sprinklers installed at the leachate pond. As is typical for MSW landfill leachate, the pond water exceeded applicable BC guidelines for a number of parameters. A groundwater monitoring well down-gradient of the irrigation area is sampled regularly.

The vegetation in the spray irrigation area is inspected throughout the irrigation season. Spray irrigation appears to have no impact on the health of the vegetation.

No significant operational issues which impacted compliance were experienced in 2022.

## **10. LANDFILL GAS MONITORING**

Soil landfill gas migration was monitored quarterly in 2022 at six gas monitoring wells on site. Landfill gas was detected in the two monitoring probes adjacent to the Quonset building (MP11-3 and MP11-4) in March, May, July and October 2022. Any potential migration into the site buildings is monitored using gas detection alarms systems inside the buildings. There is no methane soil vapour detected that could migrate beyond the property boundary. No odour complaints were received, nor were the air quality alarms set off in 2022. Table 2 summarizes the readings from the six probes for 2022.

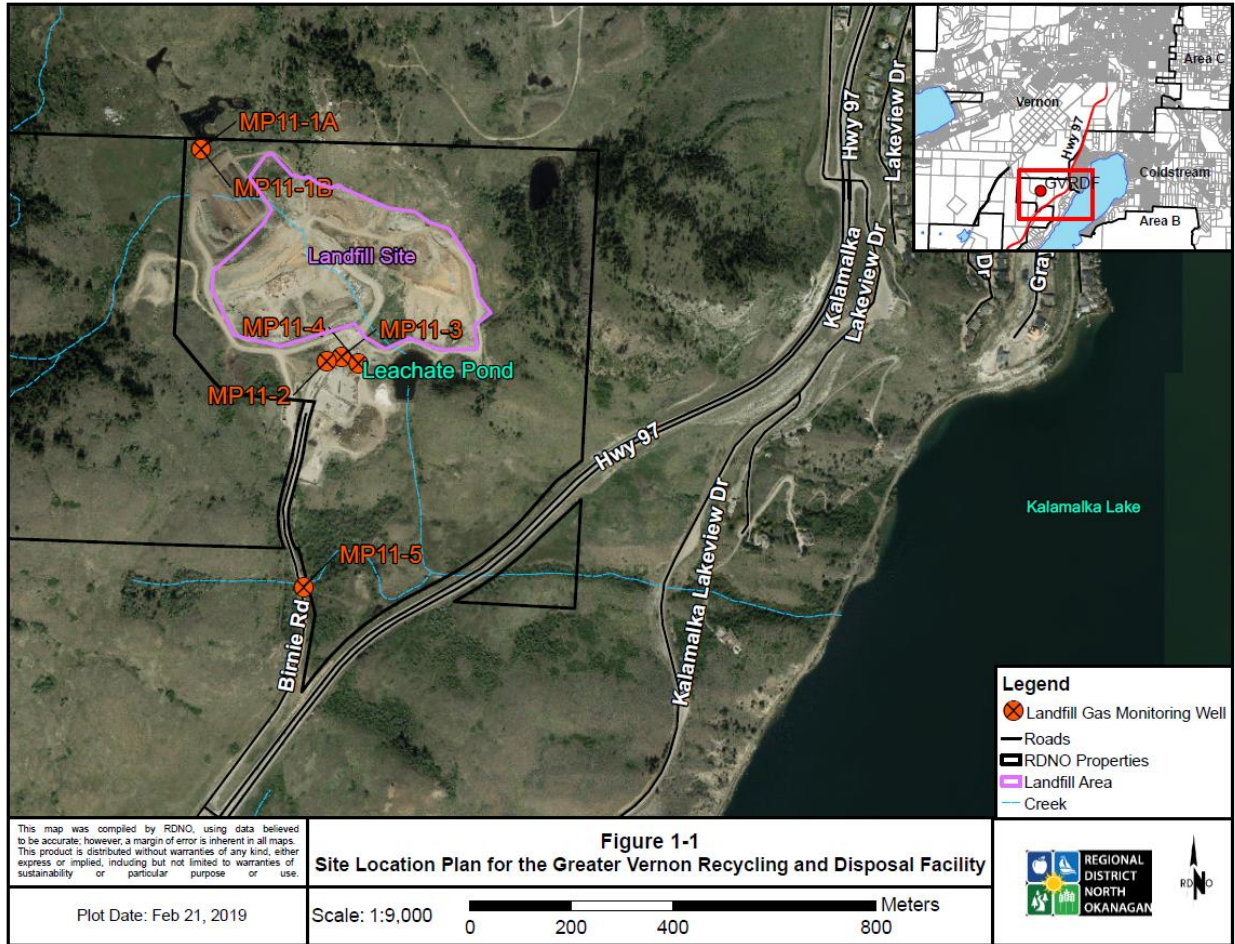
**Table 2 - Summary of CH<sub>4</sub> Readings from Landfill Gas Monitoring Wells in 2022**

<b>Monitoring Well ID</b>	<b>March CH<sub>4</sub> (%)</b>	<b>May CH<sub>4</sub> (%)</b>	<b>July CH<sub>4</sub> (%)</b>	<b>October CH<sub>4</sub> (%)</b>
MP11-1A	0	0	0	0
MP11-1B	0	0	0	0
MP11-2	0	0	0	3.9
MP11-3	8.7	3.5	17.7	4.1
MP11-4	45.2	33.0	32.9	7.9
MP11-5	0	0	0	0

## **LANDFILL GAS REGULATORY COMPLIANCE**

The 2022 GVDDF Landfill Gas Flare Operational Summary is provided in Attachment D.

Figure 1 - Greater Vernon DDF Landfill Gas Monitoring Wells



## **11. PLANNED OPERATIONAL ACTIVITIES**

Planned capital works include the following:

- Continued investigative work related to the potential lateral expansion of the fill area;
- Ongoing investigative work related to leachate storage and management;
- Installation of an additional inbound scale and associate entrance upgrades; and
- Parking Areas and Landscaping Upgrades.

## **12. FINANCIAL**

Approximately \$6,148 was spent on environmental monitoring at the Greater Vernon Diversion and Disposal Facility in 2022.

Total operation and maintenance expenditures at the GVDDF during 2022 were \$1,859,912.

A Statutory Closure Reserve was established in 2010 for closure and post closure costs at all RDNO Diversion and Disposal Facilities. The balance in the Statutory Closure Reserve at the end of 2022 was approximately \$14,995,000. It is projected that the annual contribution to the Statutory Closure Reserve for 2023 will be approximately \$1,457,000.

## **13. SOLID WASTE MANAGEMENT PLAN PROGRESS**

The RDNO Solid Waste Management Plan (SWMP) was updated in 2017-2018, endorsed by the Board of Directors, and submitted to the Ministry of Environment and Climate Change Strategy (ENV) for approval in June 2018. The SWMP was approved by the ENV in October 2019. The SWMP includes a plan implementation schedule for 5 years from 2018 to 2022 with objectives pertaining to organics diversion and disposal bans as well as waste reduction education programs and reuse initiatives. There were no site specific objectives for the GVDDF in the implementation plan for 2022. The RDNO plans to undertake a status review of the 2018 SMWP in 2023.

## **14. WILDLIFE**

Birds of many different species frequent the facility, but were not observed to be a hazard in 2022. Bald eagles are intermingled with crows, ravens, sea gulls and other species. The RDNO does not have a bird management plan for this site. Other wildlife occurrences include marmots and occasional deer around the site boundary. No incidents of bears were observed. There were no perceived hazards from wildlife at this site in 2022.

## **15. ENVIRONMENTAL COMPLAINTS**

No environmental complaints were received in 2022.

## **16. TRAINING PROGRAMS**

In 2022, GFL Environmental Inc. landfill operators completed the required training courses as part of their workplace safety program, SafetySync.

## **17. NON-COMPLIANCE WITH THE OPERATIONAL CERTIFICATE**

Further to the inspection completed by ENV in July 2018 the following OC sections were noted as being out of compliance. Provided here is an explanation of the issue and an update of any resolutions already undertaken or in progress in 2022. Non-compliances that were resolved in 2021 were described in the 2021 Annual Report and therefore removed from this list.

### ***Section 2.2 Groundwater and Surface Water Quality Protection:***

BC Approved and Working Water Quality Guidelines have been exceeded in groundwater wells 150 meters from the landfill footprint. These wells are located downgradient from the leachate storage pond and old salt storage shed. A new higher capacity leachate storage pond project is currently underway. It is expected that the new pond will capture the leachate plume downgradient of the current leachate storage pond and that groundwater quality will improve at the wells currently showing exceedances of the BC guidelines.

### ***Section 3.1.2 Inspections of Authorized Works:***

Regular inspections of authorized works and property boundaries were undertaken in 2022 but were not adequately documented. This deficiency was noted in the Conformance Review prepared for the GVDDF in 2021. Regular inspections of authorized works and property boundaries will be better documented in 2023.

### ***Section 3.5/3.7: Electric Fencing/Litter, Wildlife & Vector Control:***

The GVDDF does not have an electrified bear fence around the landfill perimeter at this time. Installation of a perimeter bear fence was included in the 2022 GVDDF capital budget, however the project was not completed.

### ***Section 3.14 Spray Irrigation:***

- a) The Leachate Pond elevation exceeded the permitted elevation from March to July in 2022. Over the last five years, an unanticipated increase in leachate inflow has caused increased pond elevations. In 2022, the pond elevation was kept much lower than in the last four years. Remedial action taken to reduce the pond elevation included redirecting a

portion of the volume of storm water entering the pond, irrigating the compost and spray irrigation area as much as possible while following the spray irrigation requirements, and enhancing evaporation by irrigating back onto the surface of the pond. Enhanced irrigation measures will continue to be used in 2023 to decrease the pond elevation as much as possible should it be necessary.

- b) Signage around the outer boundary of the spray irrigation area was installed in 2021 to inform the public that the area is being used to dispose of leachate. There is no public access to the leachate irrigation areas.

## **18. ADDITIONAL INFORMATION**

On September 21, 2022 in response to the need to manage Avian Influenza Disease (AI) contaminated carcasses at the GVDDF, the RDNO received authorization from the Ministry of Environment and Climate Strategy, Authorizations – South Environmental Protection Division to receive AI-infected waste subject to a number of requirements. The RDNO abided by the requirements of the Authorization when receiving the AI-infected material. The Authorization required that the owner of the facility (RDNO) must include in the routine annual report, and keep for inspection by an officer, an operating record at the owner's facility and must record in a written or retrievable electronic form the following information:

- a. The quantity in kilograms received,  
The quantity of AI-infected material received was 720 kg.
- b. The method and date received,  
On September 21, 2022, the AI-infected material received was double bagged in poly and was immediately buried.
- c. Identifying information from a shipping document such as a bill of lading if available,  
No documentation was provided.
- d. The date and location of burial.

The AI-infected material was received at 1:59 PM and 2:00 PM, September 21<sup>st</sup> and was disposed in the GVDDF Asbestos Disposal Area (Coordinate system: NAD 1983, UTM zone 11, HT2; Easting 335774.538m, Northing: 5565916.644m)