

How to Read Your Water Meter



A water meter measures water flow into a home or business. The meter is usually in the basement or crawlspace of a home. A water meter has a counter like an odometer in a car. It shows how many cubic metres ($1\text{m}^3=1000$ liters) of water have gone through the meter.

Meters are equipped with a **low flow indicator**.

- A small red triangle or circle,
- Water flowing at the far right with reading numbers that are changing, or
- Dripping faucet symbol or flashing plus sign.

Use Your Meter to Check for Leaks:

Make sure everything that uses water is turned off, including:

- all taps and faucets
- toilets are not flushed
- dishwasher and washing machine
- outdoor hoses and automatic irrigation
- automatic humidifiers, ice machines, drinking water filters

Watch the meter for two minutes

- If it moves, something is still using water or there is a leak

Common Types of Meters

Neptune

Reading

Indicator

Low flow indicator
Spinning red triangle or a tap icon indicate a leak

Solar Panel

Reading

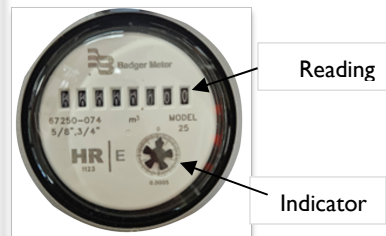
Use a flashlight to activate the LCD display

Tap Icon Leak Indicator

- Off – No leaks
- Flashing – Water usage more than 50% of time in 24hr period
- Continuous – Likely a leak

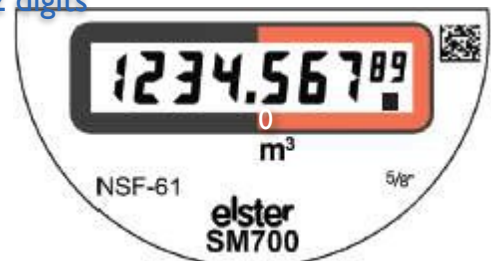
Badger

Low flow indicator



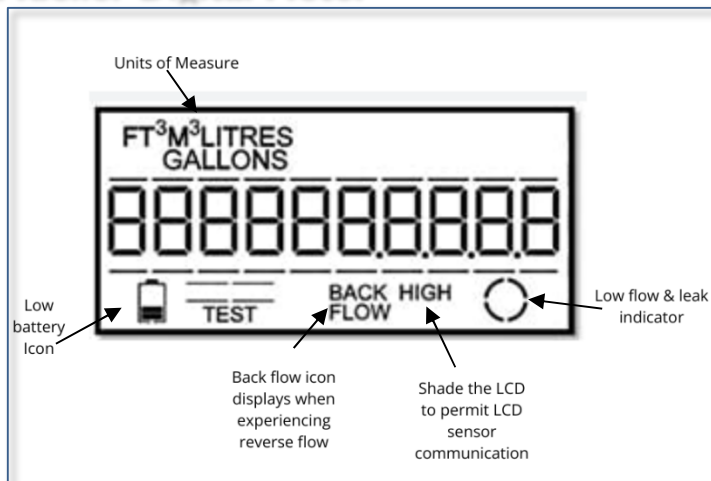
Elster Meter

Leaks indicated by flashing black box under last 2 digits

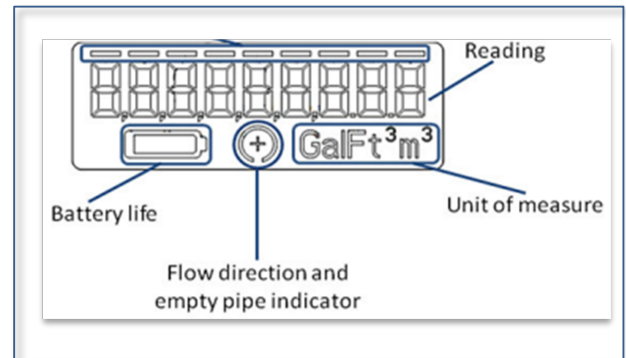


Common Types of Meters

Mueller Digital Meter



Sensus Digital Meter



Fixing Household Leaks

The RDNO recommends contacting a licensed plumber, but minor leaks can be addressed with a few simple adjustments.

Toilets - Toilets can cause significant water leaks. Clogged, worn, or misaligned parts can cause water to constantly run, wasting 20-40 litres per hour!

To check for a toilet leak:

Remove the toilet tank lid. Place a few drops of food coloring in the tank. After 15 minutes, check the toilet bowl. If the water is dyed, you've got a leak.

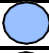



Repair suggestions:

1. Flappers - eventually become misshapen and should be replaced every five years. **TIP:** Bring the old flapper to the hardware store to ensure the new one fits.
2. Tank Fill Valve - small particles common with hard water can clog it. Look for instructions specific to your model to clear
3. Float Arm Ball - Can fill with water, unscrew it from the arm and replace it with another ball.
4. Adjust Float Arm: Bend the arm down and away from the tank wall to stop water after flushing. Check if the chain can be adjusted before changing the arm.

Faucets & Shower Heads - Replace old and worn faucet washers and gaskets. Ensure there is a tight connection between the showerhead and the pipe stem.

Outdoor Irrigation - Winterize irrigation to prevent damage from frost. Hire an irrigation professional if you suspect a leak. Replace the hose washer if the tap is dripping and ensure a tight connection to the tap using Teflon tape and a wrench.

Did you know? Even small water leaks add up to a lot of wasted water.

Water wasted per Quarter at 60 psi water pressure				
Diameter of stream		Gallons	Cubic Metres	Litres
	1/4"	1,181,500	4,475	4,475,000
	3/16"	666,000	2,521	2,521,000
	1/8"	296,000	1,120	1,120,000
	1/16"	74,000	280	280,000

Visit www.rdno.ca/waterwise for more water saving tips