



# MEMORANDUM

File No: 5790.10.09  
Date: April 1, 2026

**TO: Greater Vernon Advisory Committee**  
**FROM: Utilities Department**  
**SUBJECT: April 2026 Greater Vernon Water Supply Update**

---

## SUMMARY

Based on the Water Storage Triggers Assessment for Greater Vernon Water (GVW), the April 2026 water supply is in **Stage 1** due to March's water storage levels and the forecasted moisture and weather predictions for March and April.

As there is currently minimal outdoor watering or agricultural irrigation at this time and GVW is entering the freshet period, this Stage 1 mainly impacts operations and the environmental flows for Duteau Creek. Operations have been actively conserving water in the Duteau storage reservoirs by utilizing runoff below storage reservoirs to fill Goose Lake and minimizing flushing on the Duteau system. Recent precipitation has assisted in building snowpack and is helping keep agricultural demands low for those that requested early turn-on.

In 2024, GVW worked with large agricultural users to reduce the system peak flows to assist GVW to use stored water more efficiently. These customers were provided materials and education on how changing irrigation patterns can assist GVW. In 2025, GVW rolled out further messaging to all agricultural users. In 2026, GVW staff held an open house on March 20 that was well attended, where staff addressed water conservation measures and volumetric billing questions. Education materials are currently being updated based on feedback received at this event.

It is early in the season to predict if there will be staged restrictions as this is highly dependent on the amount of precipitation in the spring (and especially in May / June), on the timing of the freshet and when GVW starts to use storage.

## TRIGGER ASSESSMENT

GVW uses the Water Shortage Management Plan (WSMP) to guide decisions about GVW water management. Staff monitor four (4) triggers to assess the water supply and drought conditions:

1. Reservoir Levels (Water Storage)
  - o **Duteau Reservoir** – storage remains below average (Figure 1), entering the freshet period with a notable deficit. Reservoir levels have begun to increase earlier than typical, indicating an early onset of freshet; however, reduced snowpack is expected to limit peak storage. Operations are focused on meeting environmental flow requirements while minimizing flows above target levels to conserve storage. Weather

conditions and freshet timing will be critical in determining the need for staged water use restrictions during the upcoming irrigation season.

- **Kalamalka Lake** – March 2026 Kalamalka lake levels were below the average and provincial targets; however, they are showing some recovery due to recent precipitation and snowmelt (Figure 2).
2. **Current Moisture Conditions** – Based on the Snow Survey and Water Supply Bulletin, the March snowpack measurements indicate a snowpack of 83% of normal in the South Thompson Basin (Duteau Source) and 62% of normal in the Okanagan Basin (Kal Source). GVW measurements indicate a snow water equivalency (SWE) of 30% of average across three (3) sites in the Aberdeen Plateau (Figure 3). Overall precipitation at the “Vernon Auto” site shows higher-than-average precipitation for March, but lower-than-average through the fall and winter. (Figure 4).
  3. **Forecast Weather Conditions** – the Federal forecast indicates near normal precipitation from March to May with above average temperatures during this period; however, confidence in this forecast is moderate.
  4. **Customer Demand Forecast** – Customer demand for March has been typical for this time of year and reflects indoor water use.

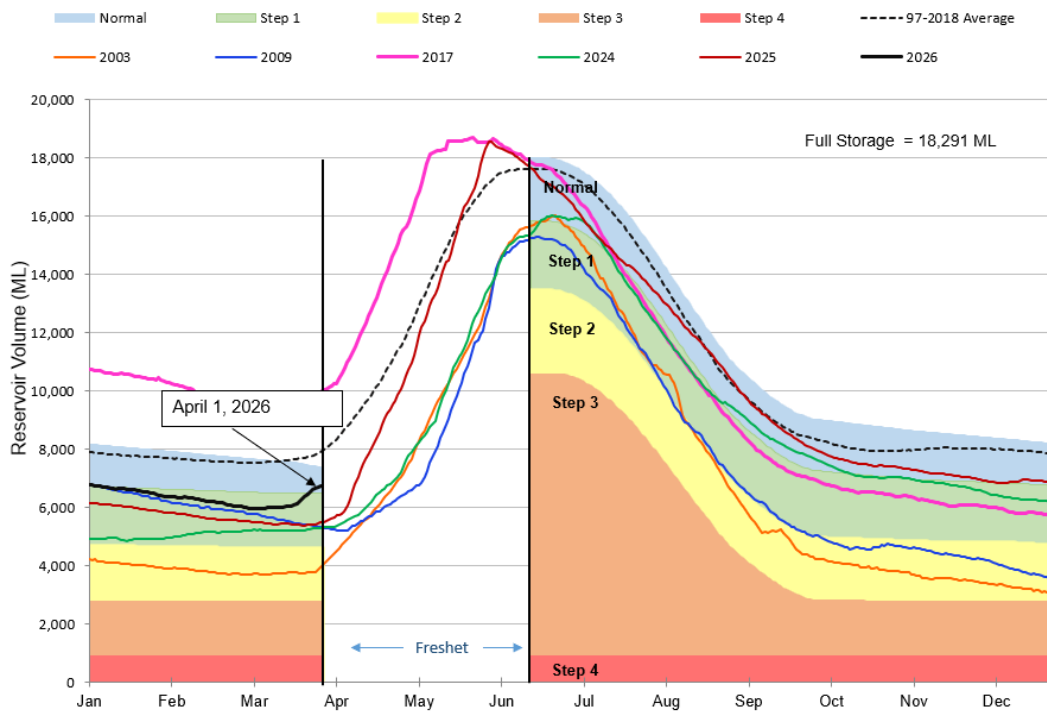


Figure 1: The Duteau reservoir levels in Megaliters (ML) to April 1, 2026

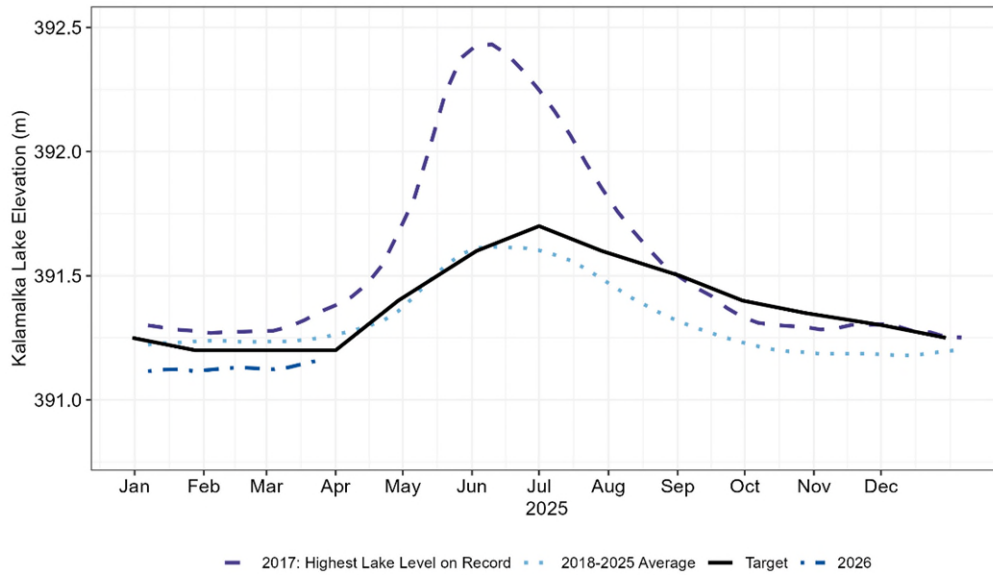


Figure 2: Kalamalka Lake elevation for 2026 compared to the 2018-2025 average and provincial targets

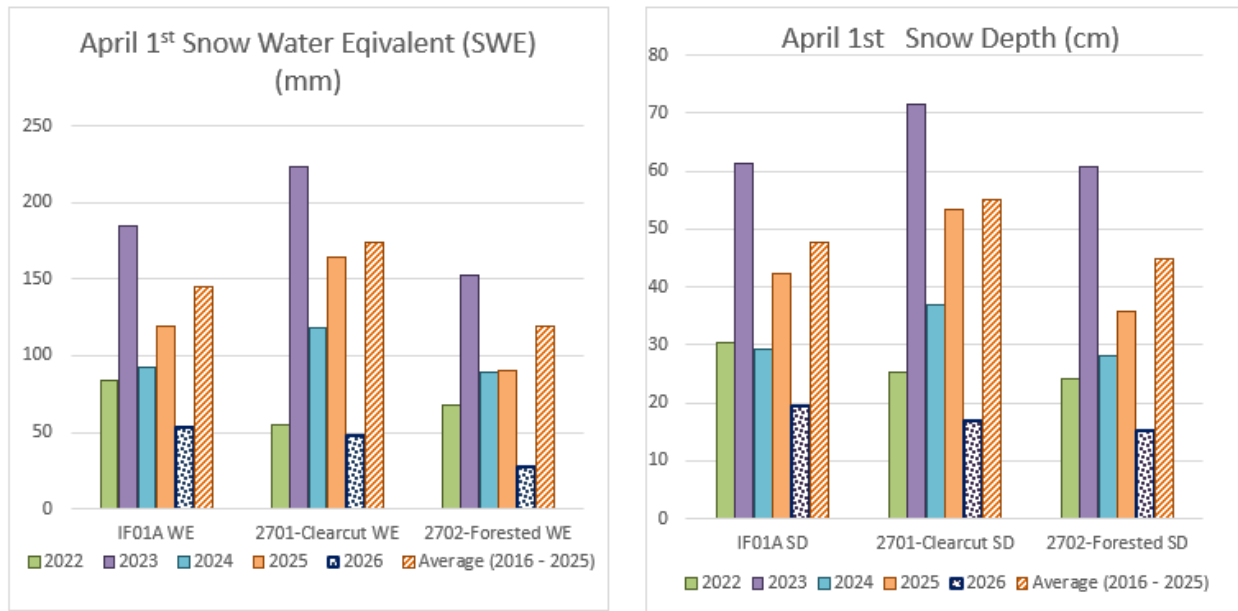


Figure 3: Snow Depth and Snow Water Equivalent for April 2026

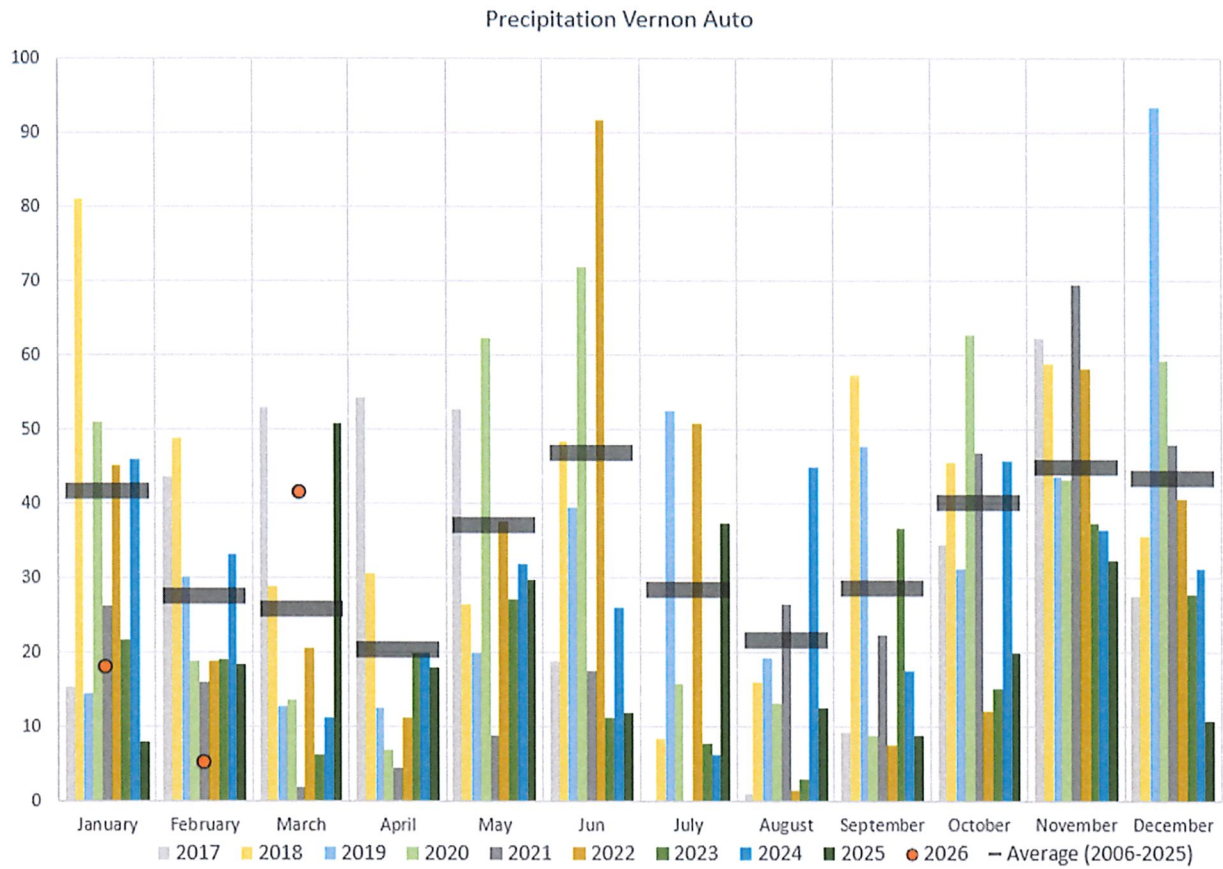


Figure 4: 2017 – 2026 comparison of monthly precipitation at Vernon Auto

For the GVW Water Shortage Management Plan and further information on the triggers and the water system can be found at [www.rdno.ca/restrictions](http://www.rdno.ca/restrictions).

Submitted by:

Zee Marcolin, P.Eng.  
General Manager, Utilities