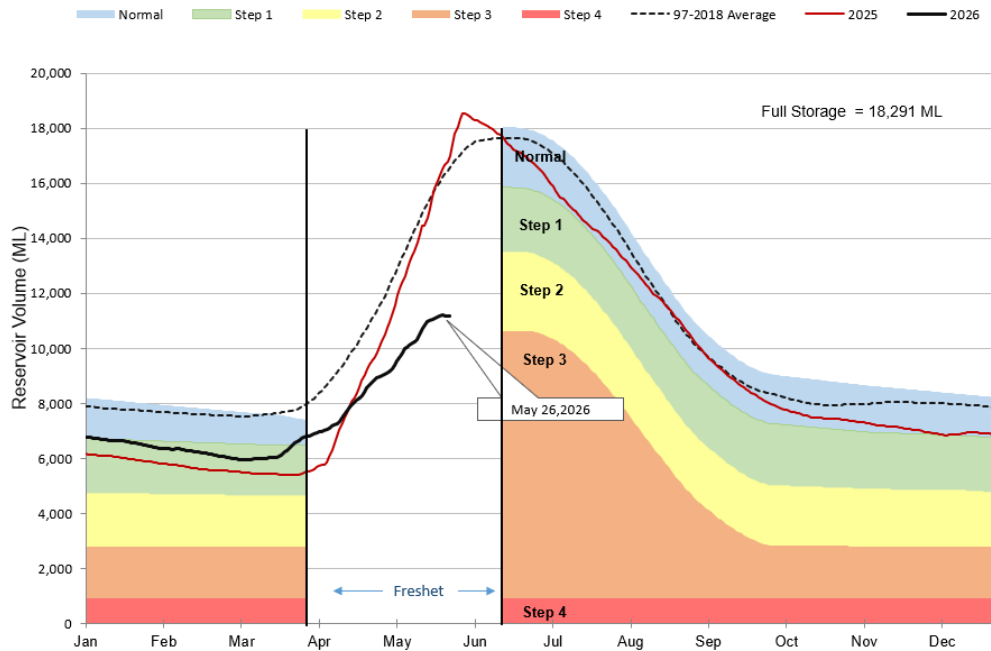




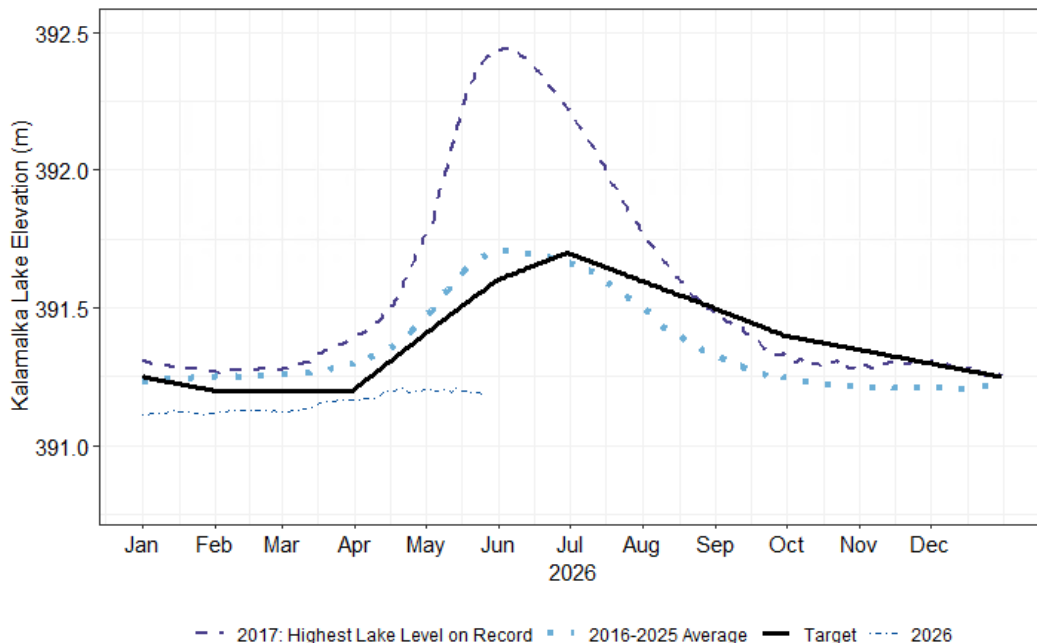
Greater Vernon Water Water Storage Update

May 26, 2026

Duteau Creek Water Storage Graph



Kalamalka Lake Water Levels



MEMBER MUNICIPALITIES:
CITY OF ARMSTRONG
DISTRICT OF COLDSTREAM
CITY OF ENDERBY

VILLAGE OF LUMBY
TOWNSHIP OF SPALLUMCHEEN
CITY OF VERNON

ELECTORAL AREAS:
"B" – SWAN LAKE
"C" – B.X. DISTRICT
"D" – LUMBY (RURAL)

"E" – CHERRYVILLE
"F" – ENDERBY (RURAL)