



**REGIONAL
DISTRICT
NORTH
OKANAGAN**

MEMORANDUM

**File No: 5790.10.09
Date: June 3, 2026**

TO: Greater Vernon Advisory Committee
FROM: Utilities Department
SUBJECT: June 2026 Greater Vernon Water Supply Update

SUMMARY

Based on the Water Storage Triggers Assessment for June 2026, **Stage 3 Water Use Restrictions** are being issued due to low water storage levels, low trending water input into Greater Vernon Water (GVW) reservoirs, forecasted low water moisture and high temperature predictions for June and July. Detailed restrictions for each customer class are provided in the [GVW Water Use and Regulation Bylaw](#). These restrictions require a 50% reduction in overall water use, and all users must take immediate action to conserve and reduce consumption.

These measures are necessary due to low snowpack this winter, which did not provide sufficient water input to the reservoirs, along with a forecast of low rainfall in the coming months. In addition, higher seasonal temperatures have resulted in increased customer use, already drawing on storage needed for summer dry periods. Under the GVW Water Shortage Management Plan, stronger restrictions are required now to protect water supplies and infrastructure through the summer and fall.

Stage 3 Water Use Restrictions are now in effect for all GVW customers, including properties in the City of Vernon, the District of Coldstream, and portions of Spallumcheen, Electoral Areas B, C, and D.

It is recommended that outdoor irrigation should be turned off, and outdoor water use must be kept to an absolute minimum. Water use and customer trends are being closely monitored, and enforcement will be strictly applied. Customers found in violation will receive one warning (door hanger notice); a second offence will result in a \$100 fine, and a third offence will result in a \$400 fine. Additional enforcement measures may be taken where necessary including water shut off.

Operations staff have been actively conserving water and will stop all routine distribution flushing and maximize the use of the Kalamalka Lake Water Source within the distribution system where feasible. Staff are meeting weekly to review storage levels.

GVW has increased customer outreach and engagement with high water users to achieve meaningful reductions in water use. GVW is also expanding communications through roadside signage, increased radio advertising, and active patrols. Staff are closely monitoring customer water use trends through metering and conducting door-hanger notifications to support compliance and enforcement efforts.

MEMBER MUNICIPALITIES:
CITY OF ARMSTRONG
DISTRICT OF COLDSTREAM
CITY OF ENDERBY

VILLAGE OF LUMBY
TOWNSHIP OF SPALLUMCHEEN
CITY OF VERNON

ELECTORAL AREAS:
"B" – SWAN LAKE
"C" – B.X. DISTRICT
"D" – LUMBY (RURAL)

"E" – CHERRYVILLE
"F" – ENDERBY (RURAL)

TRIGGER ASSESSMENT

GVW uses the Water Shortage Management Plan (WSMP) decision tree to guide decisions about GVW water management. Staff monitor four (4) triggers to assess the water supply and drought conditions (Figure 1):

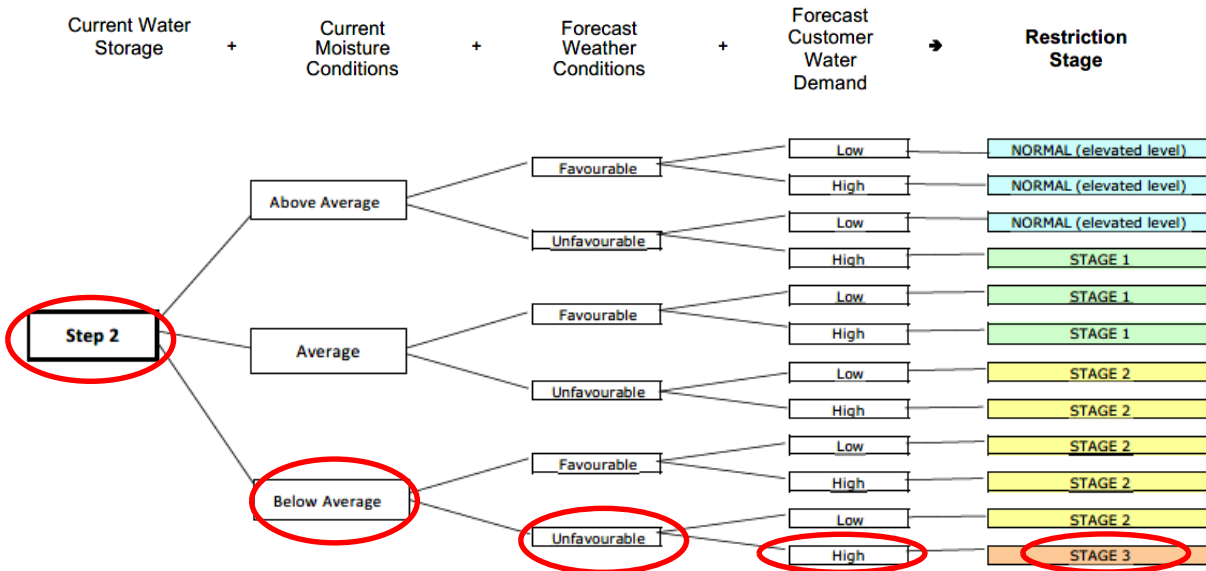


Figure 1 – Water Shortage Management Plan Decision Tree

1. Reservoir Levels (Water Storage)
 - **Duteau Reservoir** - Duteau is now within the freshet monitoring period (Figure 2); however, this period reflects historical trends and does not represent 2026 conditions. The watersheds supplying GVW have experienced low snowpack at higher elevations and very little snow at lower elevations. Environmental Flow Needs are currently being met, but reservoir levels have stopped increasing and we have begun drawing from storage earlier than in previous years. Once storage use begins, recovery from rainfall is rare, and current storage levels are likely to represent the total available supply for the remainder of the year until the next freshet.
 - **Kalamalka Lake** - Kalamalka lake levels were below the average and provincial targets and trends are showing minimal recovery (Figure 3).
2. Current Moisture Conditions – Precipitation at the “Vernon Auto” site has been significantly below normal since October last year, with only March showing above average levels. April and May both returned to below-average conditions (Figure 4).
3. Forecast Weather Conditions – Seasonal forecasts for May–June–July 2026 (issued May 1, 2026) for Kelowna indicate a strong likelihood of above-normal temperatures, with a forecast skill of 54% and a 90–100% probability of above-average conditions. Precipitation forecasts indicate near-normal conditions; however, forecast skill is low, with a higher probability (40–49%) of below-normal precipitation compared to above or normal ranges. Overall, these projections suggest continued warm conditions with an elevated risk of drier-than-normal weather, contributing to ongoing water supply concerns.
4. Customer Demand Forecast – Customer demand for the last week of April and first week of May saw unseasonably high temperatures resulting in higher customer demand (Figure 5). With the increase in spring temperatures customer demand is predicted to be above average resulting in a less favorable demand forecast.

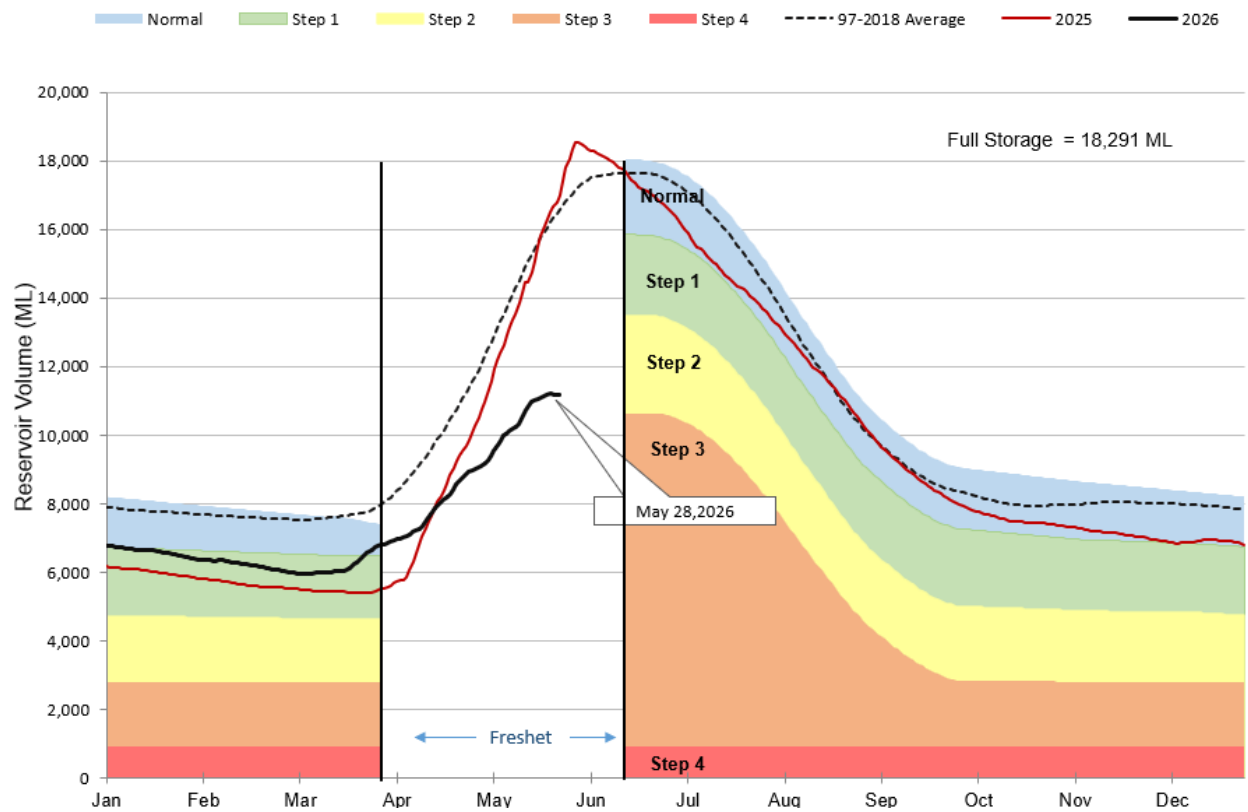


Figure 2: The Duteau reservoir levels in Megaliters (ML)

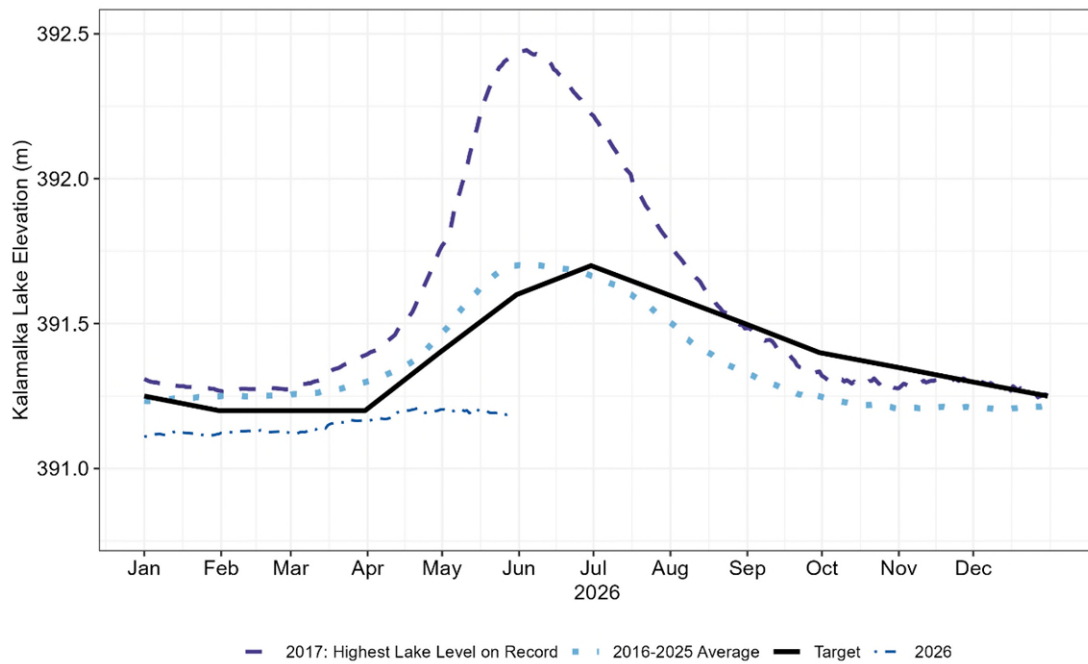


Figure 3: Kalamalka Lake elevation for 2026 compared to the 2018-2025 average and provincial targets

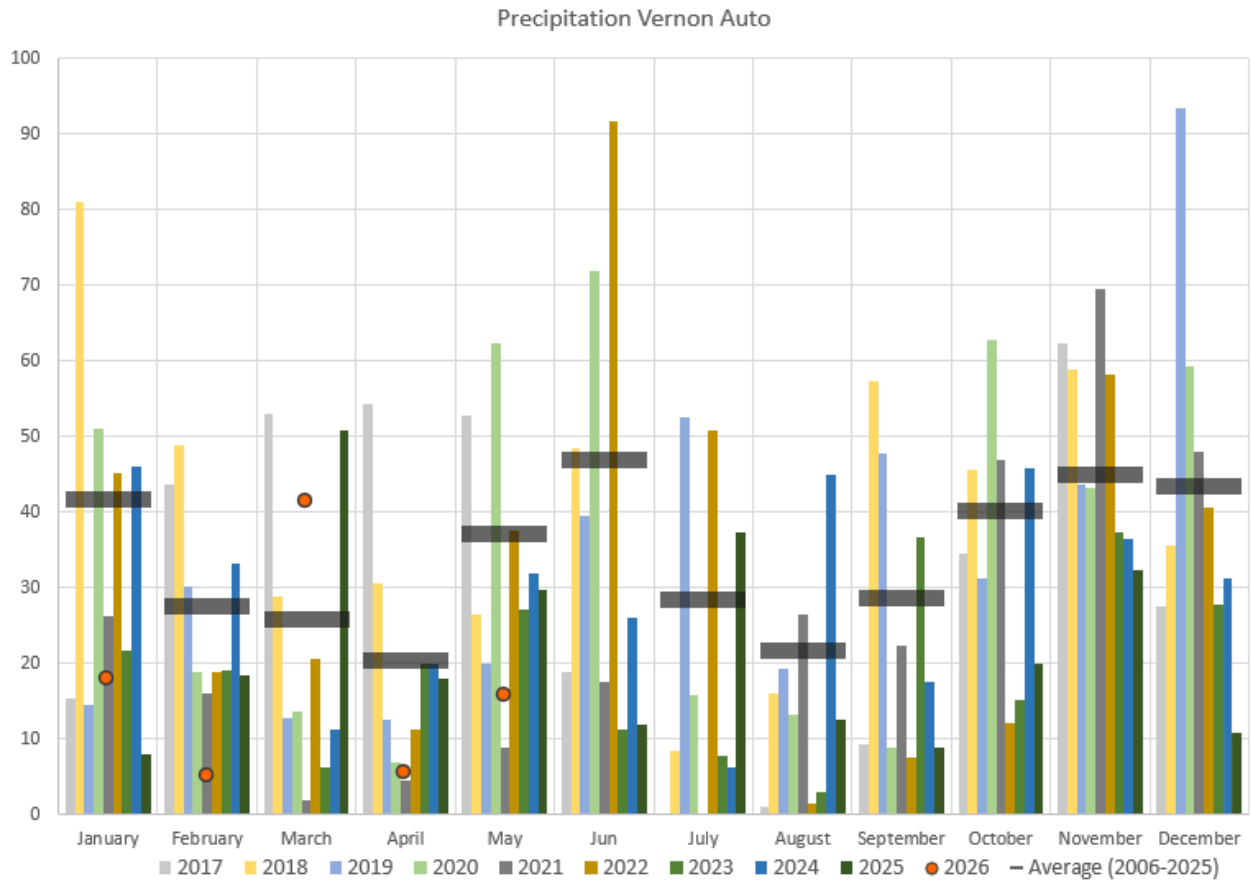


Figure 4: 2017 – 2026 Comparison of monthly precipitation at Vernon Auto

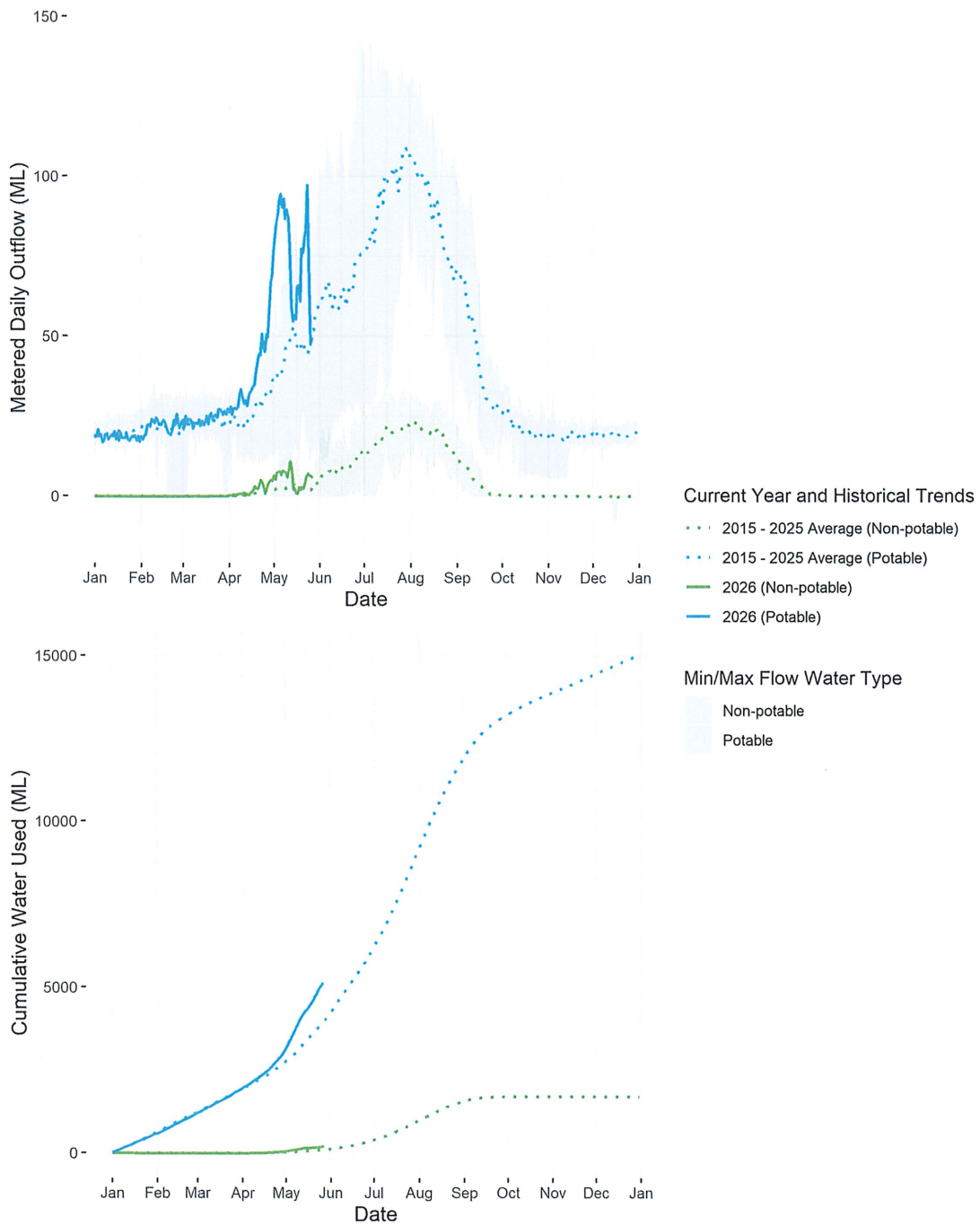


Figure 5: Potable and Non-Potable customer demand trends.

The GVW Water Shortage Management Plan and further information on the triggers and the water system can be found at www.rdno.ca/restrictions.

Submitted by:


Zee Marcolin, P.Eng.
General Manager, Utilities