



**REGIONAL  
DISTRICT  
NORTH  
OKANAGAN**

# MEMORANDUM

**File No: 5790.10.09.2026**

**Date: July 8, 2026**

**TO: Greater Vernon Advisory Committee**

**FROM: Utilities Department**

**SUBJECT: July 2026 Greater Vernon Water Supply Update**

## SUMMARY

Based on the Water Storage Triggers Assessment for July 2026, **Stage 3 Water Use Restrictions** continue due to low water storage levels, low trending water input into Greater Vernon Water (GVW) reservoirs, forecasted low precipitation and high temperature predictions for July and August. Detailed restrictions for each customer class are provided in the GVW Water Use and Regulation Bylaw. Stage 3 water restrictions have been in place for the past month, with a required 50% reduction in overall water use. Although customer demand has decreased and compliance has improved, all users must continue to take action to continue to meet conservation targets.

These measures are necessary due to low snowpack this winter, which did not provide sufficient water input to the reservoirs, along with a forecast of low rainfall in the coming months. In addition, higher seasonal temperatures have resulted in increased customer use, already drawing on storage needed for summer dry periods. Under the GVW Water Shortage Management Plan, enhanced restrictions under the GVW Water Shortage Management Plan remain in place to safeguard water supplies and infrastructure.

Stage 3 Water Use Restrictions remain in effect for all GVW customers, including properties within the City of Vernon, the District of Coldstream, and portions of Spallumcheen and Electoral Areas “B”, “C”, and “D”.

Water use and customer trends are being closely monitored, and enforcement is strictly applied. Customers found in violation of the GVW Water Use and Regulation bylaw will receive one (1) warning; a second offence will result in a \$100 fine, and a third offence will result in a \$400 fine. Additional enforcement measures may be taken where necessary, including water shut-off.

Operations staff continue to actively conserve water. Routine distribution system flushing has been suspended, and the use of the Kalamalka Lake water source is being maximized wherever feasible. The Antwerp Deep Well is also being utilized to supplement demand on the Duteau system. Operations staff are coordinating closely with the District of Coldstream and the City of Vernon to move water as needed, reducing spill at Headgates and conserving storage levels on the Aberdeen Plateau. Staff continue to meet regularly to review storage levels and system performance.

GVW has continued to enhance customer outreach and engagement to achieve meaningful reductions in water use. Communication efforts have been expanded through roadside signage,

**MEMBER MUNICIPALITIES:**  
CITY OF ARMSTRONG  
DISTRICT OF COLDSTREAM  
CITY OF ENDERBY

VILLAGE OF LUMBY  
TOWNSHIP OF SPALLUMCHEEN  
CITY OF VERNON

**ELECTORAL AREAS:**  
“B” – SWAN LAKE  
“C” – B.X. DISTRICT  
“D” – LUMBY (RURAL)

“E” – CHERRYVILLE  
“F” – ENDERBY (RURAL)

increased radio advertising, social media outlets and active patrols. Staff are closely monitoring consumption trends through metering to support compliance and enforcement. GVW is also actively communicating with the agricultural community, including holding weekly meetings with producers. In addition, work is underway to finalize opportunities for allocation sharing among producers based on water source, providing flexibility as the season progresses, recognizing the challenges all producers are facing.

GVW is also supporting and promoting the Ministry of Agriculture and Food outreach initiatives targeted to specific producer groups. A tailgate meeting was held for producers on June 17. A tailgate meeting for perennial producers was held on June 29 at 3:00 PM and another meeting for vegetable and flower producers was held on June 30 at 4:00 PM. In addition, a webinar for livestock producers is scheduled for July 9 from 6:30 PM to 8:30 PM.

## TRIGGER ASSESSMENT

GVW uses the Water Shortage Management Plan (WSMP) decision tree to guide decisions about GVW water management. Staff monitor four (4) triggers to assess the water supply and drought conditions (Figure 1):

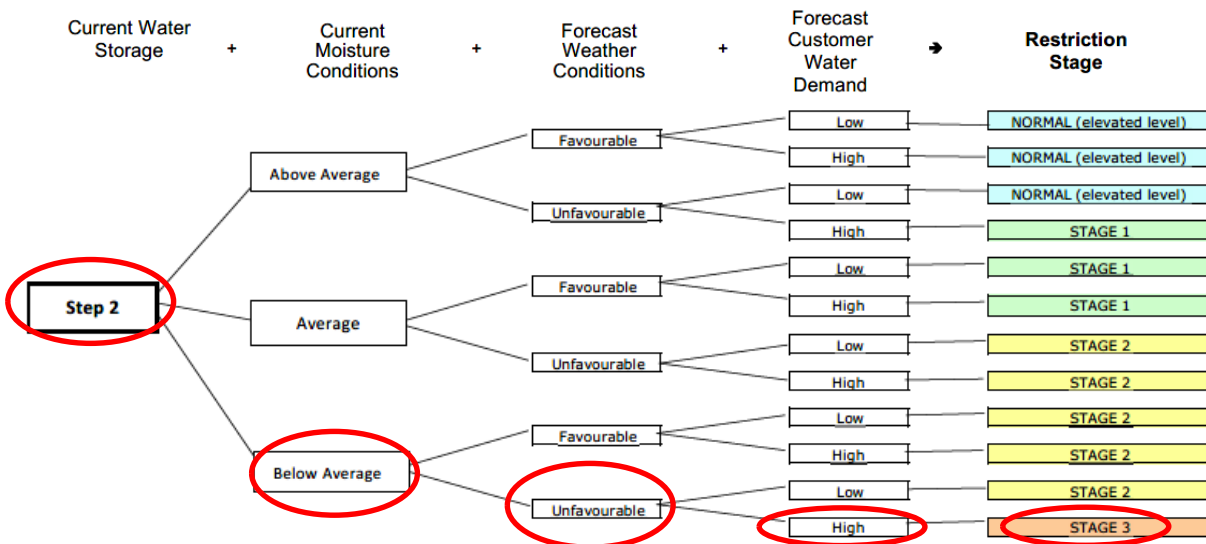


Figure 1 – Water Shortage Management Plan Decision Tree

1. Reservoir Levels (Water Storage)
  - **Duteau Reservoir** – The Duteau Reservoir is currently within Step 2, and staff continue to closely monitor storage levels. Implementation of Stage 3 restrictions, combined with precipitation during the freshet period, helped stabilize reservoir levels, with inflows generally matching outflows through late spring. System demand is now exceeding inflows to storage, marking the transition out of freshet conditions and placing increased reliance on stored water through the summer period.
  - **Kalamalka Lake** - Kalamalka lake levels continue to be below the average and provincial targets and trends showed minimal recovery through freshet (Figure 3).
2. Current Moisture Conditions – Precipitation at the “Vernon Auto” site has been significantly below normal since October last year, with only March showing above average levels. April, May, and June returned to below-average conditions (Figure 4).
3. Forecast Weather Conditions – The Federal forecast indicates an increased probability of below-normal precipitation over July and August, with probabilities ranging from 50–59% for below-normal conditions and low forecast skill, indicating uncertainty. At the same

time, above-average temperatures are expected, with a forecast skill of 54% and a 90–100% probability of above-normal temperatures, suggesting a strong likelihood of warmer-than-normal conditions

- Customer Demand Forecast – Customer demand for the last week of April and first week of May saw unseasonably high temperatures resulting in higher customer demand (Figure 5). With Stage 3 restrictions issued on June 4, cooler temperatures and precipitation led to a decrease in demand in early June. As temperatures increase, demand is expected to rise as producers adjust schedules to accommodate Stage 3 allocation reductions.

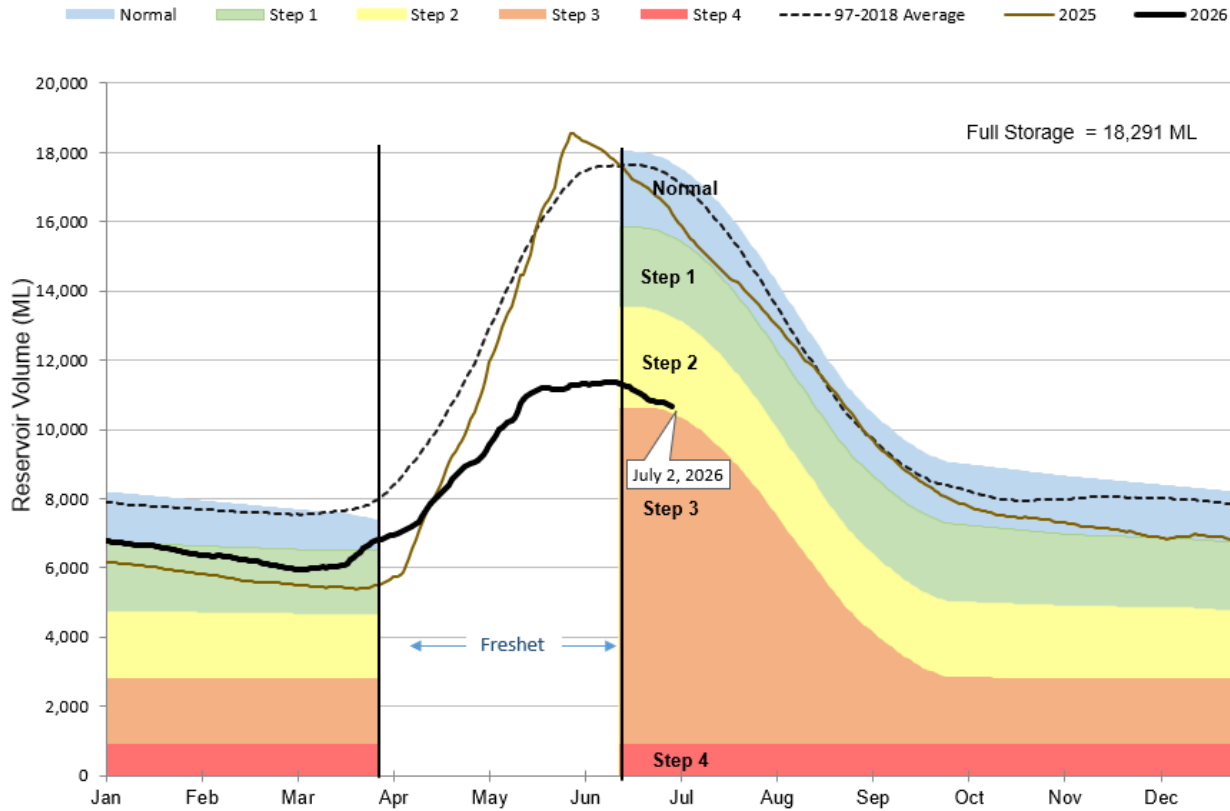


Figure 2: The Duteau reservoir levels in Megaliters (ML)

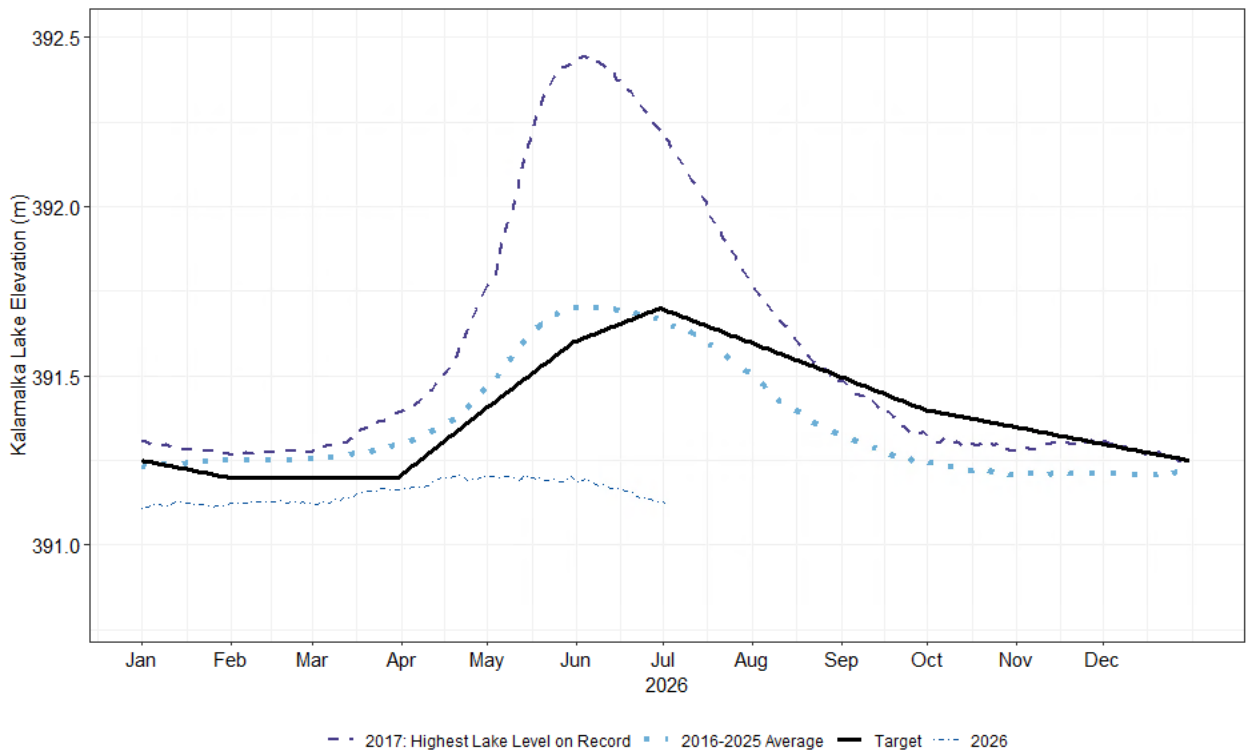


Figure 3: Kalamalka Lake elevation for 2026 compared to the 2018-2025 average and provincial targets

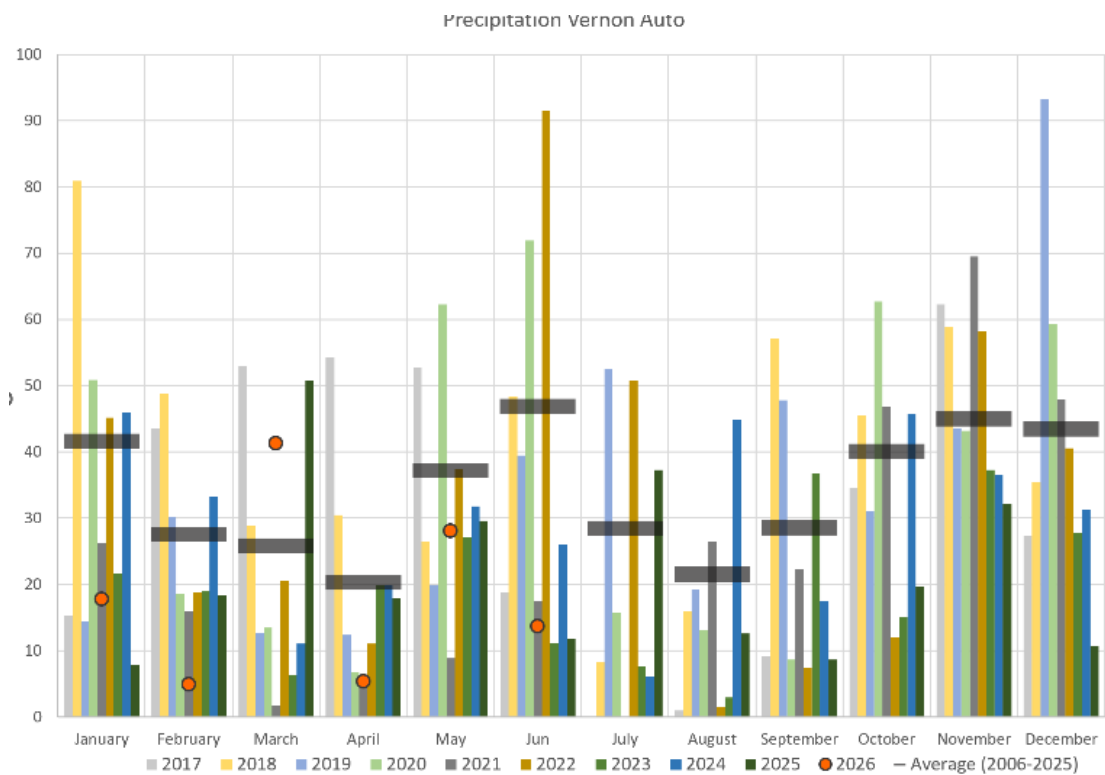


Figure 4: 2017 – 2026 Comparison of monthly precipitation at Vernon Auto

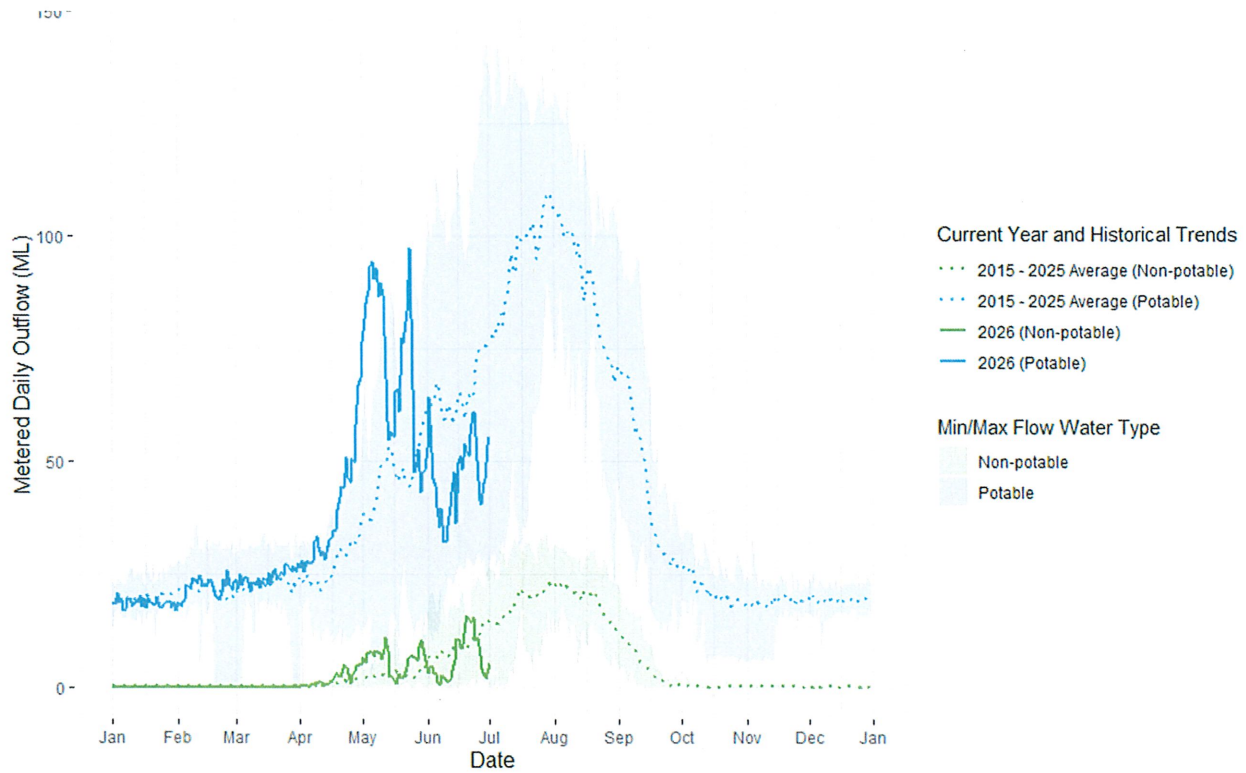


Figure 5: Potable and Non-Potable customer demand trends

The GVW Water Shortage Management Plan and further information on the triggers and the water system can be found at [www.rdn.ca/restrictions](http://www.rdn.ca/restrictions).

Submitted by:

  
John Lord, P.Eng.  
General Manager, Infrastructure